

WS

中华人民共和国卫生行业标准

WS/T 846.8—2024

医院信息平台交互标准
第8部分：医嘱信息交互服务

Hospital information platform interactive standard—
Part 8: Order information interactive services

2024-10-28 发布

2025-04-01 实施

中华人民共和国国家卫生健康委员会 发布

前 言

本标准是WS/T 846《医院信息平台交互标准》的第8部分。WS/T 846已经发布以下部分：

- 第1部分：总则
- 第2部分：个人信息注册、查询服务；
- 第3部分：医疗卫生机构注册、查询服务；
- 第4部分：医疗卫生人员注册、查询服务；
- 第5部分：术语注册、查询服务；
- 第6部分：文档注册、查询服务；
- 第7部分：就诊信息交互服务；
- 第8部分：医嘱信息交互服务；
- 第9部分：申请单信息交互服务；
- 第10部分：预约信息交互服务；
- 第11部分：状态信息交互服务。

本标准由国家卫生健康标准委员会卫生健康信息标准专业委员会负责技术审查和技术咨询，由国家卫生健康委统计信息中心负责协调性和格式审查，由国家卫生健康委规划发展与信息化司负责业务管理、法规司负责统筹管理。

本标准主要起草单位：国家卫生健康委统计信息中心、重庆大学、大连大学附属中山医院、国家电子计算机质量检验检测中心。

本标准主要起草人：董方杰、李岳峰、张翔、郑良、钟代笛、刁晓东。

医院信息平台交互标准 第8部分：医嘱信息交互服务

1 范围

本标准规定了医嘱信息交互服务消息的模板、消息架构的要求以及对消息内容的约束。本标准适用于医嘱信息交互服务的应用。

2 规范性引用文件

下列文件中的内容通过文中的规范性引用而构成本标准必不可少的条款。其中，注日期的引用文件，仅该日期对应的版本适用于本标准；不注日期的引用文件，其最新版本（包括所有的修改单）适用于本标准。

GB/T 2261.1 个人基本信息分类与代码 第1部分：人的性别代码

WS/T 445（所有部分） 电子病历基本数据集

WS/T 846.1 医院信息平台交互标准 第1部分：总则

3 术语和定义

WS/T 846.1中界定的术语和定义均适用于本标准。

4 交互服务

4.1 医嘱信息新增服务（Order InfoAdd）

4.1.1 角色和交易

4.1.1.1 角色交易图

医嘱信息新增服务的角色交易图如图1所示。

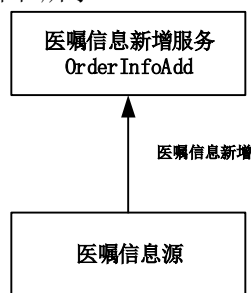


图1 医嘱信息新增服务角色交易图

4.1.1.2 角色的选择

医嘱信息新增服务的角色列表如表1所示。

表1 医嘱信息新增服务角色列表

角色	交易	选择
医嘱信息源	医嘱信息新增	必选项（R）
医嘱信息新增服务	医嘱信息新增	必选项（R）

4.1.1.3 交易流程

医嘱信息新增服务的交易流程图如图2所示。

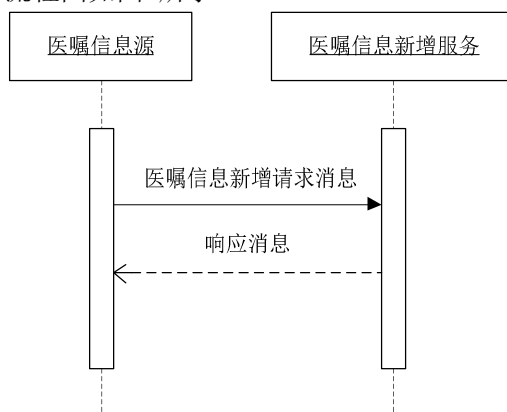


图2 医嘱信息新增服务交易流程图

医嘱信息新增服务的交易流程描述：

- 医嘱信息源向医嘱信息新增服务提交请求消息；
- 医嘱信息新增服务校验数据并进行存储，新增成功时返回成功响应消息；
- 医嘱信息新增服务新增失败时返回异常响应消息。

4.1.2 接口规范模型

4.1.2.1 请求消息模型

医嘱信息新增服务的请求消息模型如表2所示。

表2 医嘱信息新增服务请求消息模型

节点	基数	可选项	节点说明	对应数据元标识符/格式要求
/id/@extension	1..1	R	消息流水号	字符串，最大长度为50
/id/@root	1..1	R	固定值"2.16.156.10011.2.5.1.1"	—
/creationTime/@value	1..1	R	消息创建时间	日期时间格式，DT15
/controlActProcess/subject/placerGroup/author/time/@value	1..1	R	医嘱开立日期时间	DE08.50.033.00
/controlActProcess/subject/placerGroup/author/signatureCode/@code	0..1	O	签名编码,固定值"S"	—
/controlActProcess/subject/placerGroup/author/signatureText/@value	0..1	O	医嘱开立医师签名	DE02.01.039.00
/controlActProcess/subject/placerGroup/author/assignedEntity/id/item/@extension	0..1	O	医嘱开立医师工号	字符串，最大长度为50
/controlActProcess/subject/placerGroup/author/assignedEntity/id/item/@root	0..1	O	固定值"2.16.156.10011.1.4"	—
/controlActProcess/subject/placerGroup/author/assignedEntity/assignedPerson/name/item/part/@value	0..1	O	医嘱开立医师姓名	DE02.01.039.00
/controlActProcess/subject/placerGroup/author/assignedEntity/representedOrganization/id/item/@extension	0..1	O	医嘱开立科室编码	字符串，最大长度为50
/controlActProcess/subject/placerGroup/author/assignedEntity/representedOrganization/id/item/@root	0..1	O	固定值"2.16.156.10011.1.26"	—
/controlActProcess/subject/placerGroup/author/assignedEntity/representedOrganization/name/item/part/@value	0..1	O	医嘱开立科室名称	DE08.10.026.00
/controlActProcess/subject/placerGroup/verifier/time/@value	0..1	O	医嘱审核日期时间	DE06.00.504.00
substanceAdministrationRequest/verifier/signatureText/@value	0..1	O	医嘱审核医师签名	DE02.01.039.00
/controlActProcess/subject/placerGroup/verifier/assignedEntity/id/item/@extension	0..1	O	医嘱审核医师工号	字符串，最大长度为50

节点	基数	可选项	节点说明	对应数据元标识符/格式要求
nedEntity/id/item/@extension				为 50
/controlActProcess/subject/placerGroup/verifier/assignedEntity/id/item/@root	0..1	O	固定值"2.16.156.10011.1.4"	—
/controlActProcess/subject/placerGroup/verifier/assignedEntity/assignedPerson/name/item/part/@value	0..1	O	医嘱审核医师姓名	DE02.01.039.00
/controlActProcess/subject/placerGroup/component2	1..*	R	医嘱信息根节点	—
/controlActProcess/subject/placerGroup/component2/sequenceNumber/@value	0..1	O	医嘱序号	数值型, 最大长度为 4
/controlActProcess/subject/placerGroup/component2/substanceAdministrationRequest/id/@extension	1..1	R	医嘱编号	字符串, 最大长度为 50
/controlActProcess/subject/placerGroup/component2/substanceAdministrationRequest/id/@root	1..1	R	固定值"2.16.156.10011.1.28"	—
/controlActProcess/subject/placerGroup/component2/substanceAdministrationRequest/code/@codeSystem	0..1	O	固定值"2.16.156.10011.2.3.1.268"	—
/controlActProcess/subject/placerGroup/component2/substanceAdministrationRequest/code/@codeSystemName	0..1	O	固定值"医嘱项目类型代码表"	—
/controlActProcess/subject/placerGroup/component2/substanceAdministrationRequest/code/@code	0..1	O	医嘱项目类型代码	DE06.00.289.00
/controlActProcess/subject/placerGroup/component2/substanceAdministrationRequest/code/displayName/@value	0..1	O	医嘱项目类型名称	
/controlActProcess/subject/placerGroup/component2/substanceAdministrationRequest/text/@value	0..1	O	医嘱项目内容	DE06.00.288.00
/controlActProcess/subject/placerGroup/component2/substanceAdministrationRequest/effectiveTime/@validTimeLow	0..1	O	医嘱开始日期时间	DE06.00.220.00
/controlActProcess/subject/placerGroup/component2/substanceAdministrationRequest/effectiveTime/@validTimeHigh	0..1	O	医嘱结束日期时间	DE06.00.219.00
/controlActProcess/subject/placerGroup/component2/substanceAdministrationRequest/effectiveTime/code/@codeSystem	0..1	O	固定值"2.16.156.10011.2.5.1.13"	—
/controlActProcess/subject/placerGroup/component2/substanceAdministrationRequest/effectiveTime/code/@codeSystemName	0..1	O	固定值"药物使用频次代码表"	—
/controlActProcess/subject/placerGroup/component2/substanceAdministrationRequest/effectiveTime/code/@code	0..1	O	药物使用频次代码	DE06.00.133.00
/controlActProcess/subject/placerGroup/component2/substanceAdministrationRequest/effectiveTime/code/displayName/@value	0..1	O	药物使用频次名称	字符串, 最大长度为 50
/controlActProcess/subject/placerGroup/component2/substanceAdministrationRequest/routeCode/@codeSystem	0..1	O	固定值"2.16.156.10011.2.3.1.158"	—
/controlActProcess/subject/placerGroup/component2/substanceAdministrationRequest/routeCode/@codeSystemName	0..1	O	固定值"用药途径代码表"	—
/controlActProcess/subject/placerGroup/component2/substanceAdministrationRequest/routeCode/@code	0..1	O	药物使用途径代码	DE06.00.134.00
/controlActProcess/subject/placerGroup/component2/substanceAdministrationRequest/routeCode/displayName/@value	0..1	O	药物使用途径描述	字符串, 最大长度为 50
/controlActProcess/subject/placerGroup/component2/substanceAdministrationRequest/doseQuantity/@value	0..1	O	药物使用次剂量	DE08.50.023.00
/controlActProcess/subject/placerGroup/component2/substanceAdministrationRequest/doseQuantity/@unit	0..1	O	药物使用剂量单位	DE08.50.024.00
/controlActProcess/subject/placerGroup/component2/substanceAdministrationRequest/doseCheckQuantity/	0..1	O	药物使用总剂量	DE06.00.135.00

节点	基数	可选项	节点说明	对应数据元标识符/格式要求
item/numerator/@value				
/controlActProcess/subject/placerGroup/component2/substanceAdministrationRequest/doseCheckQuantity/item/numerator/@unit	0..1	O	药物使用总剂量单位	字符串, 最大长度为 10
/controlActProcess/subject/placerGroup/component2/substanceAdministrationRequest/doseCheckQuantity/item/denominator/@value	0..1	O	药物使用总剂量天数	数值型, 最大长度为 4
/controlActProcess/subject/placerGroup/component2/substanceAdministrationRequest/administrationUnitCode/@codeSystem	0..1	O	固定值 "2.16.156.10011.2.3.1.211"	—
/controlActProcess/subject/placerGroup/component2/substanceAdministrationRequest/administrationUnitCode/@codeSystemName	0..1	O	固定值"药物剂型代码表"	—
/controlActProcess/subject/placerGroup/component2/substanceAdministrationRequest/administrationUnitCode/@code	0..1	O	药品剂型代码	DE08.50.011.00
/controlActProcess/subject/placerGroup/component2/substanceAdministrationRequest/administrationUnitCode/displayName/@value	0..1	O	药品剂型描述	字符串, 最大长度为 50
/controlActProcess/subject/placerGroup/component2/substanceAdministrationRequest/consumable2/manufacturedProduct1/manufacturedProduct/code/@codeSystem	0..1	O	固定值 "2.16.156.10011.2.5.1.14"	—
/controlActProcess/subject/placerGroup/component2/substanceAdministrationRequest/consumable2/manufacturedProduct1/manufacturedProduct/code/@code	0..1	O	药物编码	字符串, 最大长度为 50
/controlActProcess/subject/placerGroup/component2/substanceAdministrationRequest/consumable2/manufacturedProduct1/manufacturedProduct/name/item/part/@value	0..1	O	药物名称	DE08.50.022.00
/controlActProcess/subject/placerGroup/component2/substanceAdministrationRequest/consumable2/manufacturedProduct1/manufacturedProduct/asContent/containerPackagedProduct/capacityQuantity/@value	0..1	O	药物规格	DE08.50.043.00
/controlActProcess/subject/placerGroup/component2/substanceAdministrationRequest/consumable2/manufacturedProduct1/manufacturedProduct/asContent/containerPackagedProduct/capacityQuantity/@unit	0..1	O	药物规格单位	字符串, 最大长度为 10
/controlActProcess/subject/placerGroup/component2/substanceAdministrationRequest/consumable2/manufacturedProduct1/subjectOf3/policy/code/@code	0..1	O	药物医保类别编码	字符串, 最大长度为 50
/controlActProcess/subject/placerGroup/component2/substanceAdministrationRequest/consumable2/manufacturedProduct1/subjectOf3/policy/code/displayName/@value	0..1	O	药物医保类别名称	字符串, 最大长度为 50
/controlActProcess/subject/placerGroup/component2/substanceAdministrationRequest/location/serviceDeliveryLocation/location/id/item/@extension	0..1	O	执行科室编码	字符串, 最大长度为 50
/controlActProcess/subject/placerGroup/component2/substanceAdministrationRequest/location/serviceDeliveryLocation/location/id/item/@root	0..1	O	固定值"2.16.156.10011.1.26"	—
/controlActProcess/subject/placerGroup/component2/substanceAdministrationRequest/location/serviceDeliveryLocation/location/name/item/part/@value	0..1	O	执行科室名称	DE08.10.026.00
/controlActProcess/subject/placerGroup/component2/substanceAdministrationRequest/occurrenceOfParentRequestReference/id/@extension	0..1	O	父医嘱编码	字符串, 最大长度为 50
/controlActProcess/subject/placerGroup/component2/substanceAdministrationRequest/pertinentInformation/observation/value/@code	0..1	O	医嘱类别代码	DE06.00.286.00
/controlActProcess/subject/placerGroup/component2/substanceAdministrationRequest/pertinentInformation	0..1	O	固定值	—

节点	基数	可选项	节点说明	对应数据元标识符/格式要求
n/observation/value/@codeSystem			"2.16.156.10011.2.3.2.58"	
/controlActProcess/subject/placerGroup/component2/substanceAdministrationRequest/pertinentInformation/observation/value/displayName/@value	0..1	O	医嘱类别代码	DE06.00.286.00
/controlActProcess/subject/placerGroup/component2/substanceAdministrationRequest/component2/supplyRequest/quantity/@value	0..1	O	领药量	字符串, 最大长度为 10
/controlActProcess/subject/placerGroup/component2/substanceAdministrationRequest/component2/supplyRequest/quantity/@unit	0..1	O	领药量单位	字符串, 最大长度为 10
/controlActProcess/subject/placerGroup/component2/substanceAdministrationRequest/subjectOf6/annotation/text/@value	0..1	O	医嘱备注信息	字符串, 最大长度为 200
/controlActProcess/subject/placerGroup/component2/substanceAdministrationRequest/subjectOf6/annotation/statusCode/@code	0..1	O	医嘱备注信息状态	字符串, 最大长度为 50
/controlActProcess/subject/placerGroup/componentOf1/encounter/id/item/@extension	1..1	R	就诊次数	数值型, 最大长度为 3
/controlActProcess/subject/placerGroup/componentOf1/encounter/id/item/@root	1..1	R	固定值"2.16.156.10011.2.5.1.8"	—
/controlActProcess/subject/placerGroup/componentOf1/encounter/id/item/@extension	1..1	R	就诊流水号	字符串, 最大长度为 50
/controlActProcess/subject/placerGroup/componentOf1/encounter/id/item/@root	1..1	R	固定值"2.16.156.10011.2.5.1.9"	—
/controlActProcess/subject/placerGroup/componentOf1/encounter/code/@code	1..1	R	患者类型代码	DE02.01.060.00
/controlActProcess/subject/placerGroup/componentOf1/encounter/code/@codeSystem	1..1	R	固定值"2.16.156.10011.2.3.1.271"	—
/controlActProcess/subject/placerGroup/componentOf1/encounter/code/displayName/@value	1..1	R	患者类型名称	字符串, 最大长度为 50
/controlActProcess/subject/placerGroup/componentOf1/encounter/subject/patient/id/item/@extension	1..1	R	患者编号	字符串, 最大长度为 50
/controlActProcess/subject/placerGroup/componentOf1/encounter/subject/patient/id/item/@root	1..1	R	固定值"2.16.156.10011.2.5.1.4"	—
/controlActProcess/subject/placerGroup/componentOf1/encounter/subject/patient/id/item/@extension	0..1	O	门(急)诊号	DE01.00.010.00
/controlActProcess/subject/placerGroup/componentOf1/encounter/subject/patient/id/item/@root	0..1	O	固定值"2.16.156.10011.1.11"	—
/controlActProcess/subject/placerGroup/componentOf1/encounter/subject/patient/id/item/@extension	0..1	O	住院号	DE01.00.014.00
/controlActProcess/subject/placerGroup/componentOf1/encounter/subject/patient/id/item/@root	0..1	O	固定值"2.16.156.10011.1.12"	—
/controlActProcess/subject/placerGroup/componentOf1/encounter/subject/patient/telecom/item/@value	0..1	O	患者电话号码	DE02.01.010.05
/controlActProcess/subject/placerGroup/componentOf1/encounter/subject/patient/patientPerson/id/item/@extension	0..1	O	患者身份证件号码	DE02.01.030.02
/controlActProcess/subject/placerGroup/componentOf1/encounter/subject/patient/patientPerson/id/item/@root	0..1	O	固定值"2.16.156.10011.1.3"	—
/controlActProcess/subject/placerGroup/componentOf1/encounter/subject/patient/patientPerson/name/item/part/@value	1..1	R	患者姓名	DE02.01.039.01
/controlActProcess/subject/placerGroup/componentOf1/encounter/subject/patient/patientPerson/administrativeGenderCode/@codeSystem	0..1	O	固定值"2.16.156.10011.2.3.3.4"	—
/controlActProcess/subject/placerGroup/componentOf1/encounter/subject/patient/patientPerson/administrativeGenderCode/@codeSystemName	0..1	O	固定值"生理性别代码表(GB/T 2261.1)"	—

节点	基数	可选项	节点说明	对应数据元标识符/格式要求
/controlActProcess/subject/placerGroup/componentOf1/encounter/subject/patient/patientPerson/administrativeGenderCode/@code	0..1	O	患者性别代码	DE02.01.040.00
/controlActProcess/subject/placerGroup/componentOf1/encounter/subject/patient/patientPerson/administrativeGenderCode/displayName/@value	0..1	O	患者性别描述	字符串, 最大长度为 50
/controlActProcess/subject/placerGroup/componentOf1/encounter/subject/patient/patientPerson/birthTime/@value	0..1	O	患者出生日期	DE02.01.005.00
/controlActProcess/subject/placerGroup/componentOf1/encounter/subject/patient/patientPerson/asOtherIDs/id/item[@root="2.16.156.10011.1.2"]/@extension	0..1	O	健康档案编号	DE01.00.009.00
/controlActProcess/subject/placerGroup/componentOf1/encounter/subject/patient/patientPerson/asOtherIDs/id/item[@root="2.16.156.10011.1.2"]/@root	0..1	O	固定值"2.16.156.10011.1.2"	—
/controlActProcess/subject/placerGroup/componentOf1/encounter/subject/patient/patientPerson/asOtherIDs/id/item/@extension	0..1	O	居民健康卡号	DE01.00.021.00
/controlActProcess/subject/placerGroup/componentOf1/encounter/subject/patient/patientPerson/asOtherIDs/id/item/@root	0..1	O	固定值"2.16.156.10011.1.19"	—
/controlActProcess/subject/placerGroup/componentOf1/encounter/location/serviceDeliveryLocation/location/id/item/@extension	0..1	O	病床号	DE01.00.026.00
/controlActProcess/subject/placerGroup/componentOf1/encounter/location/serviceDeliveryLocation/location/id/item/@root	0..1	O	固定值"2.16.156.10011.1.22"	—
/controlActProcess/subject/placerGroup/componentOf1/encounter/location/serviceDeliveryLocation/location/name/item/part/@value	0..1	O	病床号名称	字符串, 最大长度为 50
/controlActProcess/subject/placerGroup/componentOf1/encounter/location/serviceDeliveryLocation/location/asLocatedEntityPartOf/location/id/item/@extension	0..1	O	病房号	字符串, 最大长度为 50
/controlActProcess/subject/placerGroup/componentOf1/encounter/location/serviceDeliveryLocation/location/asLocatedEntityPartOf/location/id/item/@root	0..1	O	固定值"2.16.156.10011.1.21"	—
/controlActProcess/subject/placerGroup/componentOf1/encounter/location/serviceDeliveryLocation/location/asLocatedEntityPartOf/location/name/item/part/@value	0..1	O	病房号名称	DE01.00.019.00
/controlActProcess/subject/placerGroup/componentOf1/encounter/location/serviceDeliveryLocation/serviceProviderOrganization/id/item/@extension	0..1	O	患者科室编码	DE08.10.025.00
/controlActProcess/subject/placerGroup/componentOf1/encounter/location/serviceDeliveryLocation/serviceProviderOrganization/id/item/@root	0..1	O	固定值"2.16.156.10011.1.26"	—
/controlActProcess/subject/placerGroup/componentOf1/encounter/location/serviceDeliveryLocation/serviceProviderOrganization/name/item/part/@value	0..1	O	患者科室名称	DE08.10.026.00
/controlActProcess/subject/placerGroup/componentOf1/encounter/location/serviceDeliveryLocation/serviceProviderOrganization/asOrganizationPartOf/wholeOrganization/id/item/@extension	0..1	O	病区编码	字符串, 最大长度为 50
/controlActProcess/subject/placerGroup/componentOf1/encounter/location/serviceDeliveryLocation/serviceProviderOrganization/asOrganizationPartOf/wholeOrganization/id/item/@root	0..1	O	固定值"2.16.156.10011.1.27"	—
/controlActProcess/subject/placerGroup/componentOf1/encounter/location/serviceDeliveryLocation/serviceProviderOrganization/asOrganizationPartOf/wholeOrganization/name/item/part/@value	0..1	O	病区名称	DE08.10.054.00

4.1.2.2 响应消息模型（成功）

医嘱信息新增服务的响应消息模型（成功）如表3所示。

表3 医嘱信息新增服务响应消息模型（成功）

节点	基数	可选项	节点说明	对应数据元标识符/格式要求
/id/@extension	1..1	R	消息流水号	字符串，最大长度为50
/id/@root	1..1	R	固定值"2.16.156.10011.2.5.1.1"	—
/creationTime/@value	1..1	R	消息创建时间	日期时间格式，DT15
/acknowledgement/@typeCode	1..1	R	处理结果，固定值"AA"表示成功	—
/acknowledgement/targetMessage/id/@extension	1..1	R	请求消息流水号	字符串，最大长度为50
/acknowledgement/targetMessage/id/@root	1..1	R	固定值"2.16.156.10011.2.5.1.1"	—
/acknowledgement/acknowledgementDetail/text/@value	1..1	R	处理结果说明	字符串，最大长度为200

4.1.2.3 响应消息模型（异常）

医嘱信息新增服务的响应消息模型（异常）如表4所示。

表4 医嘱信息新增服务响应消息模型（异常）

节点	基数	可选项	节点说明	对应数据元标识符/格式要求
/id/@extension	1..1	R	消息流水号	字符串，最大长度为50
/id/@root	1..1	R	固定值"2.16.156.10011.2.5.1.1"	—
/creationTime/@value	1..1	R	消息创建时间	日期时间格式，DT15
/acknowledgement/@typeCode	1..1	R	处理结果，固定值"AE"表示失败	—
/acknowledgement/targetMessage/id/@extension	1..1	R	请求消息流水号	字符串，最大长度为50
/acknowledgement/targetMessage/id/@root	1..1	R	固定值"2.16.156.10011.2.5.1.1"	—
/acknowledgement/acknowledgementDetail/text/@value	1..1	R	处理结果说明	字符串，最大长度为200

4.2 医嘱信息更新服务（Order Info Update）

4.2.1 角色和交易

4.2.1.1 角色交易图

医嘱信息更新服务的角色交易图如图3所示。

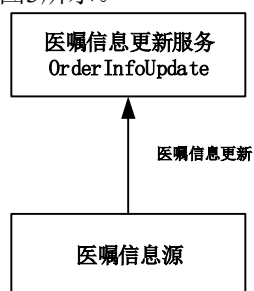


图3 医嘱信息更新服务角色交易图

4.2.1.2 角色的选择

医嘱信息更新服务的角色列表如表5所示。

表 5 医嘱信息更新服务角色列表

角色	交易	选择
医嘱信息源	医嘱信息更新	必选项 (R)
医嘱信息更新服务	医嘱信息更新	必选项 (R)

4.2.1.3 交易流程

医嘱信息更新服务的交易流程图如图4所示。

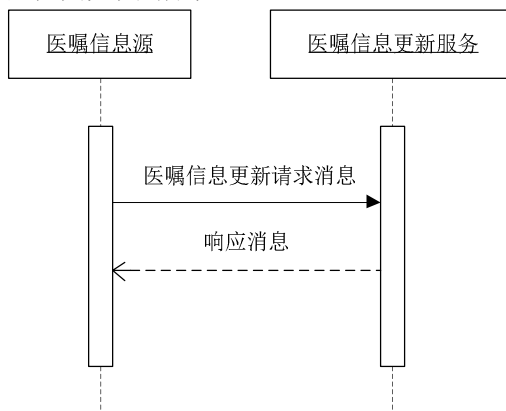


图 4 医嘱信息更新服务交易流程图

医嘱信息更新服务的交易流程描述：

- 医嘱信息源向医嘱信息更新服务提交请求消息；
- 医嘱信息更新服务校验数据并进行存储，更新成功时返回成功响应消息；
- 医嘱信息更新服务更新失败时返回异常响应消息。

4.2.2 接口规范模型

4.2.2.1 请求消息模型

医嘱信息更新服务的请求消息模型如表6所示。

表 6 医嘱信息更新服务请求消息模型

节点	基数	可选项	节点说明	对应数据元标识符/格式要求
/id/@extension	1..1	R	消息流水号	字符串，最大长度为 50
/id/@root	1..1	R	固定值"2.16.156.10011.2.5.1.1"	—
/creationTime/@value	1..1	R	消息创建时间	日期时间格式，DT15
/controlActProcess/subject/placerGroup/author/time/@value	1..1	R	医嘱开立日期时间	DE08.50.033.00
/controlActProcess/subject/placerGroup/author/signatureCode/@code	0..1	O	签名编码,固定值"S"	—
/controlActProcess/subject/placerGroup/author/signatureText/@value	0..1	O	医嘱开立医师签名	DE02.01.039.00
/controlActProcess/subject/placerGroup/author/assignedEntity/id/item/@extension	0..1	O	医嘱开立医师工号	字符串，最大长度为 50
/controlActProcess/subject/placerGroup/author/assignedEntity/id/item/@root	0..1	O	固定值"2.16.156.10011.1.4"	—
/controlActProcess/subject/placerGroup/author/assignedEntity/assignedPerson/name/item/part/@value	0..1	O	医嘱开立医师姓名	DE02.01.039.00
/controlActProcess/subject/placerGroup/author/assignedEntity/representedOrganization/id/item/@extension	0..1	O	医嘱开立科室编码	DE08.10.025.00

节点	基数	可选项	节点说明	对应数据元标识符/格式要求
/controlActProcess/subject/placerGroup/author/assignedEntity/representedOrganization/id/item/@root	0..1	O	固定值"2.16.156.10011.1.26"	—
/controlActProcess/subject/placerGroup/author/assignedEntity/representedOrganization/name/item/part/@value	0..1	O	医嘱开立科室名称	DE08.10.026.00
/controlActProcess/subject/placerGroup/verifier/time/@value	0..1	O	医嘱审核日期时间	DE06.00.504.00
substanceAdministrationRequest/verifier/signatureText/@value	0..1	O	医嘱审核医师签名	DE02.01.039.00
/controlActProcess/subject/placerGroup/verifier/assignedEntity/id/item/@extension	0..1	O	医嘱审核医师工号	字符串, 最大长度为 50
/controlActProcess/subject/placerGroup/verifier/assignedEntity/id/item/@root	0..1	O	固定值"2.16.156.10011.1.4"	—
/controlActProcess/subject/placerGroup/verifier/assignedEntity/assignedPerson/name/item/part/@value	0..1	O	医嘱审核医师姓名	DE02.01.039.00
/controlActProcess/subject/placerGroup/component2	1..*	R	医嘱信息根节点	—
/controlActProcess/subject/placerGroup/component2/sequenceNumber/@value	0..1	O	医嘱序号	数值型, 最大长度为 4
/controlActProcess/subject/placerGroup/component2/substanceAdministrationRequest/id/@extension	1..1	R	医嘱编码	字符串, 最大长度为 50
/controlActProcess/subject/placerGroup/component2/substanceAdministrationRequest/id/@root	1..1	R	固定值"2.16.156.10011.1.28"	—
/controlActProcess/subject/placerGroup/component2/substanceAdministrationRequest/code/@codeSystem	0..1	O	固定值"2.16.156.10011.2.3.1.268"	—
/controlActProcess/subject/placerGroup/component2/substanceAdministrationRequest/code/@codeSystemName	0..1	O	固定值"医嘱项目类型代码表"	—
/controlActProcess/subject/placerGroup/component2/substanceAdministrationRequest/code/@code	0..1	O	医嘱项目类型代码	DE06.00.289.00
/controlActProcess/subject/placerGroup/component2/substanceAdministrationRequest/code/displayName/@value	0..1	O	医嘱项目类型名称	
/controlActProcess/subject/placerGroup/component2/substanceAdministrationRequest/text/@value	0..1	O	医嘱项目内容	DE06.00.288.00
/controlActProcess/subject/placerGroup/component2/substanceAdministrationRequest/effectiveTime/@validTimeLow	0..1	O	医嘱计划开始日期时间	DE06.00.220.00
/controlActProcess/subject/placerGroup/component2/substanceAdministrationRequest/effectiveTime/@validTimeHigh	0..1	O	医嘱计划结束日期时间	DE06.00.219.00
/controlActProcess/subject/placerGroup/component2/substanceAdministrationRequest/effectiveTime/code/@codeSystem	0..1	O	固定值"2.16.156.10011.2.5.1.13"	—
/controlActProcess/subject/placerGroup/component2/substanceAdministrationRequest/effectiveTime/code/@codeSystemName	0..1	O	固定值"药物使用频次代码表"	—
/controlActProcess/subject/placerGroup/component2/substanceAdministrationRequest/effectiveTime/code/@code	0..1	O	药物使用频次代码	DE06.00.133.00
/controlActProcess/subject/placerGroup/component2/substanceAdministrationRequest/effectiveTime/code/displayName/@value	0..1	O	药物使用频次名称	
/controlActProcess/subject/placerGroup/component2/substanceAdministrationRequest/routeCode/@codeSystem	0..1	O	固定值"2.16.156.10011.2.3.1.158"	—
/controlActProcess/subject/placerGroup/component2/substanceAdministrationRequest/routeCode/@codeSystemName	0..1	O	固定值"用药途径代码表"	—
/controlActProcess/subject/placerGroup/component2/substanceAdministrationRequest/routeCode/@code	0..1	O	药物使用途径代码	DE06.00.134.00

节点	基数	可选项	节点说明	对应数据元标识符/格式要求
/controlActProcess/subject/placerGroup/component2/substanceAdministrationRequest/routeCode/displayName/@value	0..1	O	药物使用途径描述	字符串, 最大长度为 50
/controlActProcess/subject/placerGroup/component2/substanceAdministrationRequest/doseQuantity/@value	0..1	O	药物使用次剂量	DE08.50.023.00
/controlActProcess/subject/placerGroup/component2/substanceAdministrationRequest/doseQuantity/@unit	0..1	O	药物使用剂量单位	DE08.50.024.00
/controlActProcess/subject/placerGroup/component2/substanceAdministrationRequest/doseCheckQuantity/item/numerator/@value	0..1	O	药物使用总剂量	DE06.00.135.00
/controlActProcess/subject/placerGroup/component2/substanceAdministrationRequest/doseCheckQuantity/item/numerator/@unit	0..1	O	药物使用总剂量单位	字符串, 最大长度为 10
/controlActProcess/subject/placerGroup/component2/substanceAdministrationRequest/doseCheckQuantity/item/denominator/@value	0..1	O	药物使用总剂量天数	数值型, 最大长度为 4
/controlActProcess/subject/placerGroup/component2/substanceAdministrationRequest/administrationUnitCode/@codeSystem	0..1	O	固定值 "2.16.156.10011.2.3.1.211"	—
/controlActProcess/subject/placerGroup/component2/substanceAdministrationRequest/administrationUnitCode/@codeSystemName	0..1	O	固定值"药物剂型代码表"	—
/controlActProcess/subject/placerGroup/component2/substanceAdministrationRequest/administrationUnitCode/@code	0..1	O	药品剂型代码	DE08.50.011.00
/controlActProcess/subject/placerGroup/component2/substanceAdministrationRequest/administrationUnitCode/displayName/@value	0..1	O	药品剂型描述	字符串, 最大长度为 50
/controlActProcess/subject/placerGroup/component2/substanceAdministrationRequest/consumable2/manufacturedProduct1/manufacturedProduct/code/@codeSystem	0..1	O	固定值 "2.16.156.10011.2.5.1.14"	—
/controlActProcess/subject/placerGroup/component2/substanceAdministrationRequest/consumable2/manufacturedProduct1/manufacturedProduct/code/@code	0..1	O	药物编码	字符串, 最大长度为 50
/controlActProcess/subject/placerGroup/component2/substanceAdministrationRequest/consumable2/manufacturedProduct1/manufacturedProduct/name/item/part/@value	0..1	O	药物名称	DE08.50.022.00
/controlActProcess/subject/placerGroup/component2/substanceAdministrationRequest/consumable2/manufacturedProduct1/manufacturedProduct/asContent/containerPackagedProduct/capacityQuantity/@value	0..1	O	药物规格	DE08.50.043.00
/controlActProcess/subject/placerGroup/component2/substanceAdministrationRequest/consumable2/manufacturedProduct1/manufacturedProduct/asContent/containerPackagedProduct/capacityQuantity/@unit	0..1	O	药物规格单位	字符串, 最大长度为 10
/controlActProcess/subject/placerGroup/component2/substanceAdministrationRequest/consumable2/manufacturedProduct1/subjectOf3/policy/code/@code	0..1	O	药物医保类别编码	字符串, 最大长度为 50
/controlActProcess/subject/placerGroup/component2/substanceAdministrationRequest/consumable2/manufacturedProduct1/subjectOf3/policy/code/displayName/@value	0..1	O	药物医保类别名称	字符串, 最大长度为 50
/controlActProcess/subject/placerGroup/component2/substanceAdministrationRequest/location/serviceDeliveryLocation/location/id/item/@extension	0..1	O	执行科室编码	字符串, 最大长度为 50
/controlActProcess/subject/placerGroup/component2/substanceAdministrationRequest/location/serviceDeliveryLocation/location/id/item/@root	0..1	O	固定值"2.16.156.10011.1.26"	—

节点	基数	可选项	节点说明	对应数据元标识符/格式要求
/controlActProcess/subject/placerGroup/component2/substanceAdministrationRequest/location/serviceDeliveryLocation/location/name/item/part/@value	0..1	O	执行科室名称	DE08.10.026.00
/controlActProcess/subject/placerGroup/component2/substanceAdministrationRequest/occurrenceOf/parentRequestReference/id/@extension	0..1	O	父医嘱编码	字符串, 最大长度为 50
/controlActProcess/subject/placerGroup/component2/substanceAdministrationRequest/pertinentInformation/observation/value/@code	0..1	O	医嘱类别代码	DE06.00.286.00
/controlActProcess/subject/placerGroup/component2/substanceAdministrationRequest/pertinentInformation/observation/value/@codeSystem	0..1	O	固定值 "2.16.156.10011.2.3.2.58"	—
/controlActProcess/subject/placerGroup/component2/substanceAdministrationRequest/pertinentInformation/observation/value/@codeSystemName	0..1	O	固定值"医嘱类别代码表"	—
/controlActProcess/subject/placerGroup/component2/substanceAdministrationRequest/pertinentInformation/observation/value/displayName/@value	0..1	O	医嘱类别代码	DE06.00.286.00
/controlActProcess/subject/placerGroup/component2/substanceAdministrationRequest/component2/supplyRequest/quantity/@value	0..1	O	领药量	字符串, 最大长度为 10
/controlActProcess/subject/placerGroup/component2/substanceAdministrationRequest/component2/supplyRequest/quantity/@unit	0..1	O	领药量单位	字符串, 最大长度为 10
/controlActProcess/subject/placerGroup/component2/substanceAdministrationRequest/subjectOf6/annotation/text/@value	0..1	O	医嘱备注信息	字符串, 最大长度为 200
/controlActProcess/subject/placerGroup/component2/substanceAdministrationRequest/subjectOf6/annotation/statusCode/@code	0..1	O	医嘱备注信息状态	字符串, 最大长度为 50
/controlActProcess/subject/placerGroup/componentOf1/encounter/id/item/@extension	1..1	R	就诊次数	数值型, 最大长度为 3
/controlActProcess/subject/placerGroup/componentOf1/encounter/id/item/@root	1..1	R	固定值"2.16.156.10011.2.5.1.8"	—
/controlActProcess/subject/placerGroup/componentOf1/encounter/id/item/@extension	1..1	R	就诊流水号	字符串, 最大长度为 50
/controlActProcess/subject/placerGroup/componentOf1/encounter/id/item/@root	1..1	R	固定值"2.16.156.10011.2.5.1.9"	—
/controlActProcess/subject/placerGroup/componentOf1/encounter/code/@code	1..1	R	患者类型代码	DE02.01.060.00
/controlActProcess/subject/placerGroup/componentOf1/encounter/code/@codeSystem	1..1	R	固定值 "2.16.156.10011.2.3.1.271"	—
/controlActProcess/subject/placerGroup/componentOf1/encounter/code/displayName/@value	1..1	R	患者类型名称	字符串, 最大长度为 50
/controlActProcess/subject/placerGroup/componentOf1/encounter/subject/patient/id/item/@extension	1..1	R	患者编码	字符串, 最大长度为 50
/controlActProcess/subject/placerGroup/componentOf1/encounter/subject/patient/id/item/@root	1..1	R	固定值"2.16.156.10011.2.5.1.4"	—
/controlActProcess/subject/placerGroup/componentOf1/encounter/subject/patient/id/item/@extension	0..1	O	门(急)诊号	DE01.00.010.00
/controlActProcess/subject/placerGroup/componentOf1/encounter/subject/patient/id/item/@root	0..1	O	固定值"2.16.156.10011.1.11"	—
/controlActProcess/subject/placerGroup/componentOf1/encounter/subject/patient/id/item/@extension	0..1	O	住院号	DE01.00.014.00
/controlActProcess/subject/placerGroup/componentOf1/encounter/subject/patient/id/item/@root	0..1	O	固定值"2.16.156.10011.1.12"	—
/controlActProcess/subject/placerGroup/componentOf1/encounter/subject/patient/telecom/item/@value	0..1	O	患者电话号码	DE02.01.010.05
/controlActProcess/subject/placerGroup/componentOf1/encounter/subject/patient/patientPerson/id/item/@	0..1	O	患者身份证件号码	DE02.01.030.02

节点	基数	可选项	节点说明	对应数据元标识符/格式要求
xtension				
/controlActProcess/subject/placerGroup/componentOfEncounter/subject/patient/patientPerson/id/item/@root	0..1	O	固定值"2.16.156.10011.1.3"	—
/controlActProcess/subject/placerGroup/componentOfEncounter/subject/patient/patientPerson/name/item/part/@value	1..1	R	患者姓名	DE02.01.039.01
/controlActProcess/subject/placerGroup/componentOfEncounter/subject/patient/patientPerson/administrativeGenderCode/@codeSystem	0..1	O	固定值"2.16.156.10011.2.3.3.4"	—
/controlActProcess/subject/placerGroup/componentOfEncounter/subject/patient/patientPerson/administrativeGenderCode/@codeSystemName	0..1	O	固定值"生理性别代码表(GB/T 2261.1)"	—
/controlActProcess/subject/placerGroup/componentOfEncounter/subject/patient/patientPerson/administrativeGenderCode/@code	0..1	O	患者性别代码	DE02.01.040.00
/controlActProcess/subject/placerGroup/componentOfEncounter/subject/patient/patientPerson/administrativeGenderCode/displayName/@value	0..1	O	患者性别描述	字符串, 最大长度为 50
/controlActProcess/subject/placerGroup/componentOfEncounter/subject/patient/patientPerson/birthTime/@value	0..1	O	患者出生日期	DE02.01.005.00
/controlActProcess/subject/placerGroup/componentOfEncounter/subject/patient/patientPerson/asOtherIDs/id/item[@root="2.16.156.10011.1.2"]/@extension	0..1	O	健康档案编号	DE01.00.009.00
/controlActProcess/subject/placerGroup/componentOfEncounter/subject/patient/patientPerson/asOtherIDs/id/item[@root="2.16.156.10011.1.2"]/@root	0..1	O	固定值"2.16.156.10011.1.2"	—
/controlActProcess/subject/placerGroup/componentOfEncounter/subject/patient/patientPerson/asOtherIDs/id/item/@extension	0..1	O	居民健康卡号	DE01.00.021.00
/controlActProcess/subject/placerGroup/componentOfEncounter/subject/patient/patientPerson/asOtherIDs/id/item/@root	0..1	O	固定值"2.16.156.10011.1.19"	—
/controlActProcess/subject/placerGroup/componentOfEncounter/location/serviceDeliveryLocation/location/id/item/@extension	0..1	O	病床号	DE01.00.026.00
/controlActProcess/subject/placerGroup/componentOfEncounter/location/serviceDeliveryLocation/location/id/item/@root	0..1	O	固定值"2.16.156.10011.1.22"	—
/controlActProcess/subject/placerGroup/componentOfEncounter/location/serviceDeliveryLocation/location/name/item/part/@value	0..1	O	病床号名称	字符串, 最大长度为 50
/controlActProcess/subject/placerGroup/componentOfEncounter/location/serviceDeliveryLocation/location/asLocatedEntityPartOf/location/id/item/@extension	0..1	O	病房号	字符串, 最大长度为 50
/controlActProcess/subject/placerGroup/componentOfEncounter/location/serviceDeliveryLocation/location/asLocatedEntityPartOf/location/id/item/@root	0..1	O	固定值"2.16.156.10011.1.21"	—
/controlActProcess/subject/placerGroup/componentOfEncounter/location/serviceDeliveryLocation/location/asLocatedEntityPartOf/location/name/item/part/@value	0..1	O	病房号名称	DE01.00.019.00
/controlActProcess/subject/placerGroup/componentOfEncounter/location/serviceDeliveryLocation/serviceProviderOrganization/id/item/@extension	0..1	O	患者科室编码	字符串, 最大长度为 50
/controlActProcess/subject/placerGroup/componentOfEncounter/location/serviceDeliveryLocation/serviceProviderOrganization/id/item/@root	0..1	O	固定值"2.16.156.10011.1.26"	—
/controlActProcess/subject/placerGroup/componentOfEncounter/location/serviceDeliveryLocation/service	0..1	O	患者科室名称	DE08.10.026.00

节点	基数	可选项	节点说明	对应数据元标识符/格式要求
eProviderOrganization/name/item/part/@value				
/controlActProcess/subject/placerGroup/componentOf/encounter/location/serviceDeliveryLocation/serviceProviderOrganization/asOrganizationPartOf/wholeOrganization/id/item/@extension	0..1	O	病区编码	字符串，最大长度为 50
/controlActProcess/subject/placerGroup/componentOf/encounter/location/serviceDeliveryLocation/serviceProviderOrganization/asOrganizationPartOf/wholeOrganization/id/item/@root	0..1	O	固定值"2.16.156.10011.1.27"	—
/controlActProcess/subject/placerGroup/componentOf/encounter/location/serviceDeliveryLocation/serviceProviderOrganization/asOrganizationPartOf/wholeOrganization/name/item/part/@value	0..1	O	病区名称	DE08.10.054.00

4.2.2.2 响应消息模型（成功）

医嘱信息更新服务的响应消息模型（成功）如表7所示。

表 7 医嘱信息更新服务响应消息模型（成功）

节点	基数	可选项	节点说明	对应数据元标识符/格式要求
/id/@extension	1..1	R	消息流水号	字符串，最大长度为 50
/id/@root	1..1	R	固定值"2.16.156.10011.2.5.1.1"	—
/creationTime/@value	1..1	R	消息创建时间	日期时间格式，DT15
/acknowledgement/@typeCode	1..1	R	处理结果，固定值"AA"表示成功	—
/acknowledgement/targetMessage/id/@extension	1..1	R	请求消息流水号	字符串，最大长度为 50
/acknowledgement/targetMessage/id/@root	1..1	R	固定值"2.16.156.10011.2.5.1.1"	—
/acknowledgement/acknowledgementDetail/text/@value	1..1	R	处理结果说明	字符串，最大长度为 200

4.2.2.3 响应消息模型（异常）

医嘱信息更新服务的响应消息模型（异常）如表8所示。

表 8 医嘱信息更新服务响应消息模型（异常）

节点	基数	可选项	节点说明	对应数据元标识符/格式要求
/id/@extension	1..1	R	消息流水号	字符串，最大长度为 50
/id/@root	1..1	R	固定值"2.16.156.10011.2.5.1.1"	—
/creationTime/@value	1..1	R	消息创建时间	日期时间格式，DT15
/acknowledgement/@typeCode	1..1	R	处理结果，固定值"AE"表示失败	—
/acknowledgement/targetMessage/id/@extension	1..1	R	请求消息流水号	字符串，最大长度为 50
/acknowledgement/targetMessage/id/@root	1..1	R	固定值"2.16.156.10011.2.5.1.1"	—
/acknowledgement/acknowledgementDetail/text/@value	1..1	R	处理结果说明	字符串，最大长度为 200

4.3 医嘱信息查询服务（Order InfoQuery）

4.3.1 角色和交易

4.3.1.1 角色交易图

医嘱信息查询服务的角色交易图如图5所示。

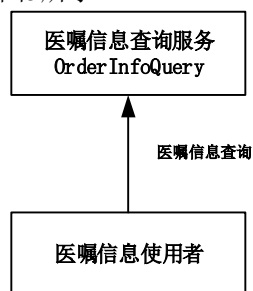


图5 医嘱信息查询服务角色交易图

4.3.1.2 角色的选择

医嘱信息查询服务的角色列表如表9所示。

表9 医嘱信息查询服务角色列表

角色	交易	选择
医嘱信息使用者	医嘱信息查询	必选项 (R)
医嘱信息查询服务	医嘱信息查询	必选项 (R)

4.3.1.3 交易流程

医嘱信息查询服务的交易流程图如图6所示。

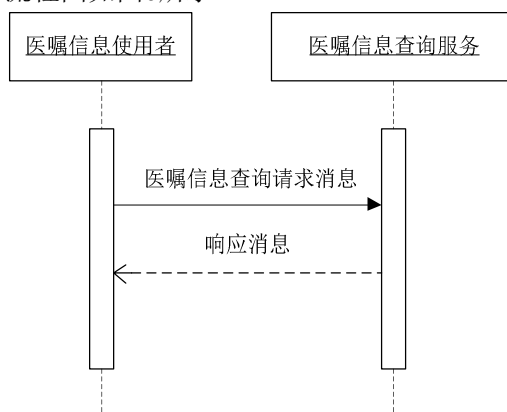


图6 医嘱信息查询服务交易流程图

医嘱信息查询服务的交易流程描述：

- 医嘱信息使用者向医嘱信息查询服务提交医嘱信息查询请求消息；
- 医嘱信息查询服务将查询结果返回给医嘱信息使用者，查询成功时返回成功响应消息；
- 医嘱信息查询服务查询失败时返回异常响应消息。

4.3.2 接口规范模型

4.3.2.1 请求消息模型

医嘱信息查询服务的请求消息模型如表10所示。

表10 医嘱信息查询服务请求消息模型

节点	基数	可选项	节点说明	对应数据元标识符/格式要求
/id/@extension	1..1	R	消息流水号	字符串，最大长度为50
/id/@root	1..1	R	固定值"2.16.156.10011.2.5.1.1"	—
/creationTime/@value	1..1	R	消息创建时间	日期时间格式，

节点	基数	可选项	节点说明	对应数据元标识符/格式要求
				DT15
/controlActProcess/queryByParameter/queryByParameterPayload/actId/value/item/@extension	1..1	R	医嘱编号	字符串, 最大长度为 50
/controlActProcess/queryByParameter/queryByParameterPayload/actId/value/item/@root	1..1	R	固定值"2.16.156.10011.1.28"	—
/controlActProcess/queryByParameter/queryByParameterPayload/authorId/value/item/@extension	0..1	O	医嘱开立医师工号	字符串, 最大长度为 50
/controlActProcess/queryByParameter/queryByParameterPayload/authorId/value/item/@root	0..1	O	固定值"2.16.156.10011.1.4"	—
/controlActProcess/queryByParameter/queryByParameterPayload/effectiveTime/value/low/@value	0..1	O	医嘱有效期间 (低值)	日期型, 最大长度为 15
/controlActProcess/queryByParameter/queryByParameterPayload/effectiveTime/value/high/@value	0..1	O	医嘱有效期间 (高值)	日期型, 最大长度为 15
/controlActProcess/queryByParameter/queryByParameterPayload/patientId /value/item/@extension	0..1	O	患者编号	字符串, 最大长度为 50
/controlActProcess/queryByParameter/queryByParameterPayload/patientId /value/item/@root	0..1	O	固定值"2.16.156.10011.2.5.1.4"	—

4.3.2.2 响应消息模型 (成功)

医嘱信息查询服务的响应消息模型 (成功) 如表11所示。

表 11 医嘱信息查询服务响应消息模型 (成功)

节点	基数	可选项	节点说明	对应数据元标识符/格式要求
/id/@extension	1..1	R	消息流水号	字符串, 最大长度为 50
/id/@root	1..1	R	固定值"2.16.156.10011.2.5.1.1"	—
/creationTime/@value	1..1	R	消息创建时间	日期时间格式, DT15
/acknowledgement/@typeCode	1..1	R	处理结果, 固定值"AA"表示成功	字符串, 最大长度为 10
/acknowledgement/targetMessage/id/@extension	1..1	R	请求消息流水号	字符串, 最大长度为 50
/acknowledgement/targetMessage/id/@root	1..1	R	固定值"2.16.156.10011.2.5.1.1"	—
/acknowledgement/acknowledgementDetail/text/@value	1..1	R	处理结果说明	字符串, 最大长度为 200
/controlActProcess/subject/placerGroup/author/time/@value	1..1	R	医嘱开立日期时间	DE08.50.033.00
/controlActProcess/subject/placerGroup/author/signatureCode/@code	0..1	O	电子签名编码, 固定值"S"	—
/controlActProcess/subject/placerGroup/author/signatureText/@value	0..1	O	医嘱开立医师签名	DE02.01.039.00
/controlActProcess/subject/placerGroup/author/assignedEntity/id/item/@extension	0..1	O	医嘱开立医师工号	字符串, 最大长度为 50
/controlActProcess/subject/placerGroup/author/assignedEntity/id/item/@root	0..1	O	固定值"2.16.156.10011.1.4"	—
/controlActProcess/subject/placerGroup/author/assignedEntity/assignedPerson/name/item/part/@value	0..1	O	医嘱开立医师姓名	DE02.01.039.00
/controlActProcess/subject/placerGroup/author/assignedEntity/representedOrganization/id/item/@extension	0..1	O	医嘱开立科室编码	字符串, 最大长度为 50
/controlActProcess/subject/placerGroup/author/assignedEntity/representedOrganization/id/item/@root	0..1	O	固定值"2.16.156.10011.1.26"	—
/controlActProcess/subject/placerGroup/author/assignedEntity/representedOrganization/name/item/part/@value	0..1	O	医嘱开立科室名称	DE08.10.026.00
/controlActProcess/subject/placerGroup/verifier/time/	0..1	O	医嘱审核日期时间	DE06.00.504.00

节点	基数	可选项	节点说明	对应数据元标识符/格式要求
@value				
substanceAdministrationRequest/verifier/signatureText/@value	0..1	O	医嘱审核医师签名	DE02.01.039.00
/controlActProcess/subject/placerGroup/verifier/assignedEntity/id/item/@extension	0..1	O	医嘱审核医师工号	字符串, 最大长度为 50
/controlActProcess/subject/placerGroup/verifier/assignedEntity/id/item/@root	0..1	O	固定值"2.16.156.10011.1.4"	—
/controlActProcess/subject/placerGroup/verifier/assignedEntity/assignedPerson/name/item/part/@value	0..1	O	医嘱审核医师姓名	DE02.01.039.00
/controlActProcess/subject/placerGroup/component2	1..*	R	医嘱信息根节点	—
/controlActProcess/subject/placerGroup/component2/sequenceNumber/@value	0..1	O	医嘱序号	数值型, 最大长度为 4
/controlActProcess/subject/placerGroup/component2/substanceAdministrationRequest/id/@extension	1..1	R	医嘱编码	字符串, 最大长度为 50
/controlActProcess/subject/placerGroup/component2/substanceAdministrationRequest/id/@root	1..1	R	固定值"2.16.156.10011.1.28"	—
/controlActProcess/subject/placerGroup/component2/substanceAdministrationRequest/code/@codeSystem	0..1	O	固定值"2.16.156.10011.2.3.1.268"	—
/controlActProcess/subject/placerGroup/component2/substanceAdministrationRequest/code/@codeSystemName	0..1	O	固定值"医嘱项目类型代码表"	—
/controlActProcess/subject/placerGroup/component2/substanceAdministrationRequest/code/@code	0..1	O	医嘱项目类型代码	DE06.00.289.00
/controlActProcess/subject/placerGroup/component2/substanceAdministrationRequest/code/displayName/@value	0..1	O	医嘱项目类型名称	
/controlActProcess/subject/placerGroup/component2/substanceAdministrationRequest/text/@value	0..1	O	医嘱项目内容	DE06.00.288.00
/controlActProcess/subject/placerGroup/component2/substanceAdministrationRequest/effectiveTime/@validTimeLow	0..1	O	医嘱计划开始日期时间	DE06.00.222.00
/controlActProcess/subject/placerGroup/component2/substanceAdministrationRequest/effectiveTime/@validTimeHigh	0..1	O	医嘱计划结束日期时间	DE06.00.219.00
/controlActProcess/subject/placerGroup/component2/substanceAdministrationRequest/effectiveTime/code/@codeSystem	0..1	O	固定值"2.16.156.10011.2.5.1.13"	—
/controlActProcess/subject/placerGroup/component2/substanceAdministrationRequest/effectiveTime/code/@codeSystemName	0..1	O	固定值"药物使用频次代码表"	—
/controlActProcess/subject/placerGroup/component2/substanceAdministrationRequest/effectiveTime/code/@code	0..1	O	药物使用频次代码	DE06.00.133.00
/controlActProcess/subject/placerGroup/component2/substanceAdministrationRequest/effectiveTime/code/displayName/@value	0..1	O	药物使用频次名称	
/controlActProcess/subject/placerGroup/component2/substanceAdministrationRequest/routeCode/@codeSystem	0..1	O	固定值"2.16.156.10011.2.3.1.158"	—
/controlActProcess/subject/placerGroup/component2/substanceAdministrationRequest/routeCode/@codeSystemName	0..1	O	固定值"用药途径代码表"	—
/controlActProcess/subject/placerGroup/component2/substanceAdministrationRequest/routeCode/@code	0..1	O	药物使用途径代码	DE06.00.134.00
/controlActProcess/subject/placerGroup/component2/substanceAdministrationRequest/routeCode/displayName/@value	0..1	O	药物使用途径描述	字符串, 最大长度为 50
/controlActProcess/subject/placerGroup/component2/substanceAdministrationRequest/doseQuantity/@value	0..1	O	药物使用次剂量	DE08.50.023.00

节点	基数	可选项	节点说明	对应数据元标识符/格式要求
/controlActProcess/subject/placerGroup/component2/substanceAdministrationRequest/doseQuantity/@unit	0..1	O	药物使用剂量单位	DE08.50.024.00
/controlActProcess/subject/placerGroup/component2/substanceAdministrationRequest/doseCheckQuantity/item/numerator/@value	0..1	O	药物使用总剂量	DE06.00.135.00
/controlActProcess/subject/placerGroup/component2/substanceAdministrationRequest/doseCheckQuantity/item/numerator/@unit	0..1	O	药物使用总剂量单位	字符串, 最大长度为 10
/controlActProcess/subject/placerGroup/component2/substanceAdministrationRequest/doseCheckQuantity/item/denominator/@value	0..1	O	药物使用总剂量天数	数值型, 最大长度为 4
/controlActProcess/subject/placerGroup/component2/substanceAdministrationRequest/administrationUnitCode/@codeSystem	0..1	O	固定值 "2.16.156.10011.2.3.1.211"	—
/controlActProcess/subject/placerGroup/component2/substanceAdministrationRequest/administrationUnitCode/@codeSystemName	0..1	O	固定值"药物剂型代码表"	—
/controlActProcess/subject/placerGroup/component2/substanceAdministrationRequest/administrationUnitCode/@code	0..1	O	药品剂型代码	DE08.50.011.00
/controlActProcess/subject/placerGroup/component2/substanceAdministrationRequest/administrationUnitCode/displayName/@value	0..1	O	药品剂型描述	字符串, 最大长度为 50
/controlActProcess/subject/placerGroup/component2/substanceAdministrationRequest/consumable2/manufacturedProduct1/manufacturedProduct/code/@codeSystem	0..1	O	固定值 "2.16.156.10011.2.5.1.14"	—
/controlActProcess/subject/placerGroup/component2/substanceAdministrationRequest/consumable2/manufacturedProduct1/manufacturedProduct/code/@code	0..1	O	药物编码	字符串, 最大长度为 50
/controlActProcess/subject/placerGroup/component2/substanceAdministrationRequest/consumable2/manufacturedProduct1/manufacturedProduct/name/item/part/@value	0..1	O	药物名称	DE08.50.022.00
/controlActProcess/subject/placerGroup/component2/substanceAdministrationRequest/consumable2/manufacturedProduct1/manufacturedProduct/asContent/containerPackagedProduct/capacityQuantity/@value	0..1	O	药物规格	DE08.50.043.00
/controlActProcess/subject/placerGroup/component2/substanceAdministrationRequest/consumable2/manufacturedProduct1/manufacturedProduct/asContent/containerPackagedProduct/capacityQuantity/@unit	0..1	O	药物规格单位	字符串, 最大长度为 10
/controlActProcess/subject/placerGroup/component2/substanceAdministrationRequest/consumable2/manufacturedProduct1/subjectOf3/policy/code/@code	0..1	O	药物医保类别编码	字符串, 最大长度为 50
/controlActProcess/subject/placerGroup/component2/substanceAdministrationRequest/consumable2/manufacturedProduct1/subjectOf3/policy/code/displayName/@value	0..1	O	药物医保类别名称	字符串, 最大长度为 50
/controlActProcess/subject/placerGroup/component2/substanceAdministrationRequest/location/serviceDeliveryLocation/location/id/item/@extension	0..1	O	执行科室编码	字符串, 最大长度为 50
/controlActProcess/subject/placerGroup/component2/substanceAdministrationRequest/location/serviceDeliveryLocation/location/id/item/@root	0..1	O	固定值"2.16.156.10011.1.26"	—
/controlActProcess/subject/placerGroup/component2/substanceAdministrationRequest/location/serviceDeliveryLocation/location/name/item/part/@value	0..1	O	执行科室名称	DE08.10.026.00
/controlActProcess/subject/placerGroup/component2/substanceAdministrationRequest/occurrenceOf/parentRequestReference/id/@extension	0..1	O	父医嘱编码	字符串, 最大长度为 50

节点	基数	可选项	节点说明	对应数据元标识符/格式要求
/controlActProcess/subject/placerGroup/component2/substanceAdministrationRequest/pertinentInformation/observation/value/@code	0..1	O	医嘱类别代码	DE06.00.286.00
/controlActProcess/subject/placerGroup/component2/substanceAdministrationRequest/pertinentInformation/observation/value/@codeSystem	0..1	O	固定值 "2.16.156.10011.2.3.2.58"	—
/controlActProcess/subject/placerGroup/component2/substanceAdministrationRequest/pertinentInformation/observation/value/@codeSystemName	0..1	O	固定值"医嘱类别代码表"	—
/controlActProcess/subject/placerGroup/component2/substanceAdministrationRequest/pertinentInformation/observation/value/displayName/@value	0..1	O	医嘱类别代码	DE06.00.286.00
/controlActProcess/subject/placerGroup/component2/substanceAdministrationRequest/component2/supplyRequest/quantity/@value	0..1	O	领药量	字符串, 最大长度为 10
/controlActProcess/subject/placerGroup/component2/substanceAdministrationRequest/component2/supplyRequest/quantity/@unit	0..1	O	领药量单位	字符串, 最大长度为 10
/controlActProcess/subject/placerGroup/component2/substanceAdministrationRequest/subjectOf6/annotation/text/@value	0..1	O	医嘱备注信息	字符串, 最大长度为 200
/controlActProcess/subject/placerGroup/component2/substanceAdministrationRequest/subjectOf6/annotation/statusCode/@code	0..1	O	医嘱备注信息状态	字符串, 最大长度为 50
/controlActProcess/subject/placerGroup/componentOf1/encounter/id/item/@extension	1..1	R	就诊次数	数值型, 最大长度为 3
/controlActProcess/subject/placerGroup/componentOf1/encounter/id/item/@root	1..1	R	固定值"2.16.156.10011.2.5.1.8"	—
/controlActProcess/subject/placerGroup/componentOf1/encounter/id/item/@extension	1..1	R	就诊流水号	字符串, 最大长度为 50
/controlActProcess/subject/placerGroup/componentOf1/encounter/id/item/@root	1..1	R	固定值"2.16.156.10011.2.5.1.9"	—
/controlActProcess/subject/placerGroup/componentOf1/encounter/code/@code	1..1	R	患者类型代码	DE02.01.060.00
/controlActProcess/subject/placerGroup/componentOf1/encounter/code/@codeSystem	1..1	R	固定值 "2.16.156.10011.2.3.1.271"	—
/controlActProcess/subject/placerGroup/componentOf1/encounter/code/displayName/@value	1..1	R	患者类型名称	字符串, 最大长度为 50
/controlActProcess/subject/placerGroup/componentOf1/encounter/subject/patient/id/item/@extension	1..1	R	患者编码	字符串, 最大长度为 50
/controlActProcess/subject/placerGroup/componentOf1/encounter/subject/patient/id/item/@root	1..1	R	固定值"2.16.156.10011.2.5.1.4"	—
/controlActProcess/subject/placerGroup/componentOf1/encounter/subject/patient/id/item/@extension	0..1	O	门(急)诊号	DE01.00.010.00
/controlActProcess/subject/placerGroup/componentOf1/encounter/subject/patient/id/item/@root	0..1	O	固定值"2.16.156.10011.1.11"	—
/controlActProcess/subject/placerGroup/componentOf1/encounter/subject/patient/id/item/@extension	0..1	O	住院号	DE01.00.014.00
/controlActProcess/subject/placerGroup/componentOf1/encounter/subject/patient/id/item/@root	0..1	O	固定值"2.16.156.10011.1.12"	—
/controlActProcess/subject/placerGroup/componentOf1/encounter/subject/patient/telecom/item/@value	0..1	O	患者电话号码	DE02.01.010.05
/controlActProcess/subject/placerGroup/componentOf1/encounter/subject/patient/patientPerson/id/item/@extension	0..1	O	患者身份证件号码	DE02.01.030.02
/controlActProcess/subject/placerGroup/componentOf1/encounter/subject/patient/patientPerson/id/item/@root	0..1	O	固定值"2.16.156.10011.1.3"	—
/controlActProcess/subject/placerGroup/componentOf1/encounter/subject/patient/patientPerson/name/item	1..1	R	患者姓名	DE02.01.039.01

节点	基数	可选项	节点说明	对应数据元标识符/格式要求
/part/@value				
/controlActProcess/subject/placerGroup/componentOfIfl/encounter/subject/patient/patientPerson/administrativeGenderCode/@codeSystem	0..1	O	固定值"2.16.156.10011.2.3.3.4"	—
/controlActProcess/subject/placerGroup/componentOfIfl/encounter/subject/patient/patientPerson/administrativeGenderCode/@codeSystemName	0..1	O	固定值"生理性别代码表(GB/T 2261.1)"	—
/controlActProcess/subject/placerGroup/componentOfIfl/encounter/subject/patient/patientPerson/administrativeGenderCode/@code	0..1	O	患者性别代码	DE02.01.040.00
/controlActProcess/subject/placerGroup/componentOfIfl/encounter/subject/patient/patientPerson/administrativeGenderCode/displayName/@value	0..1	O	患者性别名称	
/controlActProcess/subject/placerGroup/componentOfIfl/encounter/subject/patient/patientPerson/birthTime/@value	0..1	O	患者出生日期	DE02.01.005.00
/controlActProcess/subject/placerGroup/componentOfIfl/encounter/subject/patient/patientPerson/asOtherIDs/id/item[@root="2.16.156.10011.1.2"]/@extension	0..1	O	健康档案编号	DE01.00.009.00
/controlActProcess/subject/placerGroup/componentOfIfl/encounter/subject/patient/patientPerson/asOtherIDs/id/item[@root="2.16.156.10011.1.2"]/@root	0..1	O	固定值"2.16.156.10011.1.2"	—
/controlActProcess/subject/placerGroup/componentOfIfl/encounter/subject/patient/patientPerson/asOtherIDs/id/item/@extension	0..1	O	居民健康卡号	DE01.00.021.00
/controlActProcess/subject/placerGroup/componentOfIfl/encounter/subject/patient/patientPerson/asOtherIDs/id/item/@root	0..1	O	固定值"2.16.156.10011.1.19"	—
/controlActProcess/subject/placerGroup/componentOfIfl/encounter/location/serviceDeliveryLocation/location/id/item/@extension	0..1	O	病床号	DE01.00.026.00
/controlActProcess/subject/placerGroup/componentOfIfl/encounter/location/serviceDeliveryLocation/location/id/item/@root	0..1	O	固定值"2.16.156.10011.1.22"	—
/controlActProcess/subject/placerGroup/componentOfIfl/encounter/location/serviceDeliveryLocation/location/name/item/part/@value	0..1	O	病床号名称	字符串, 最大长度为 50
/controlActProcess/subject/placerGroup/componentOfIfl/encounter/location/serviceDeliveryLocation/location/asLocatedEntityPartOf/location/id/item/@extension	0..1	O	病房号	字符串, 最大长度为 50
/controlActProcess/subject/placerGroup/componentOfIfl/encounter/location/serviceDeliveryLocation/location/asLocatedEntityPartOf/location/id/item/@root	0..1	O	固定值"2.16.156.10011.1.21"	—
/controlActProcess/subject/placerGroup/componentOfIfl/encounter/location/serviceDeliveryLocation/location/asLocatedEntityPartOf/location/name/item/part/@value	0..1	O	病房号名称	DE01.00.019.00
/controlActProcess/subject/placerGroup/componentOfIfl/encounter/location/serviceDeliveryLocation/serviceProviderOrganization/id/item/@extension	0..1	O	患者科室编码	字符串, 最大长度为 50
/controlActProcess/subject/placerGroup/componentOfIfl/encounter/location/serviceDeliveryLocation/serviceProviderOrganization/id/item/@root	0..1	O	固定值"2.16.156.10011.1.26"	—
/controlActProcess/subject/placerGroup/componentOfIfl/encounter/location/serviceDeliveryLocation/serviceProviderOrganization/name/item/part/@value	0..1	O	科室名称	DE08.10.026.00
/controlActProcess/subject/placerGroup/componentOfIfl/encounter/location/serviceDeliveryLocation/serviceProviderOrganization/asOrganizationPartOf/wholeOrganization/id/item/@extension	0..1	O	病区号	字符串, 最大长度为 50

节点	基数	可选项	节点说明	对应数据元标识符/格式要求
/controlActProcess/subject/placerGroup/componentOf/encounter/location/serviceDeliveryLocation/serviceProviderOrganization/asOrganizationPartOf/wholeOrganization/id/item/@root	0..1	O	固定值"2.16.156.10011.1.27"	—
/controlActProcess/subject/placerGroup/componentOf/encounter/location/serviceDeliveryLocation/serviceProviderOrganization/asOrganizationPartOf/wholeOrganization/name/item/part/@value	0..1	O	病区名称	DE08.10.054.00
/controlActProcess/queryAck/queryResponseCode/@code	1..1	R	查询结果代码	字符串, 最大长度为 50

4.3.2.3 响应消息模型（异常）

医嘱信息查询服务的响应消息模型（异常）如表12所示。

表 12 医嘱信息查询服务响应消息模型（异常）

节点	基数	可选项	节点说明	对应数据元标识符/格式要求
/id/@extension	1..1	R	消息流水号	字符串, 最大长度为 50
/id/@root	1..1	R	固定值"2.16.156.10011.2.5.1.1"	—
/creationTime/@value	1..1	R	消息创建时间	日期时间格式, DT15
/acknowledgement/@typeCode	1..1	R	处理结果, 固定值"AE"表示失败	—
/acknowledgement/targetMessage/id/@extension	1..1	R	请求消息流水号	字符串, 最大长度为 50
/acknowledgement/targetMessage/id/@root	1..1	R	固定值"2.16.156.10011.2.5.1.1"	—
/acknowledgement/acknowledgementDetail/text/@value	1..1	R	处理结果说明	字符串, 最大长度为 200
/controlActProcess/queryAck/queryResponseCode/@code	1..1	R	查询结果代码	字符串, 最大长度为 50

附录 A
(资料性)
消息示例

A.1 医嘱信息新增服务

A.1.1 医嘱信息新增服务-请求消息

```
<POOR_IN200901UV xmlns="https://www.chiss.org.cn" xmlns:xsi="http://www.w3.org/2001/XMLSchema-instance"
ITSVersion="XML_1.0" xsi:schemaLocation="https://www.chiss.org.cn
https://www.chiss.org.cn/HL7V3Message/multicacheschemas/POOR_IN200901UV.xsd">
  <!-- 消息流水号 -->
  <id root="2.16.156.10011.2.5.1.1" extension="22a0f9e0-4454-11dc-a6be-3603d6866807"/>
  <!-- 消息创建时间 -->
  <creationTime value="20241010110000"/>
  <!-- 消息的服务标识-->
  <interactionId root="2.16.156.10011.2.5.1.2" extension="POOR_IN200901UV"/>
  <!--处理代码，标识此消息是否是产品、训练、调试系统的一部分。D：调试；P：产品；T：训练 -->
  <processingCode code="P"/>
  <!-- 消息处理模式：A(Archive)；I(Initial load)；R(Restore from archive)；T(Current
  processing) -->
  <processingModeCode/>
  <!-- 消息应答：AL(Always)；ER(Error/reject only)；NE(Never) -->
  <acceptAckCode code="AL"/>
  <!-- 接受者 -->
  <receiver typeCode="RCV">
    <device classCode="DEV" determinerCode="INSTANCE">
      <!-- 接受者ID -->
      <id>
        <item root="2.16.156.10011.2.5.1.3" extension="@111"/>
      </id>
    </device>
  </receiver>
  <!-- 发送者 -->
  <sender typeCode="SND">
    <device classCode="DEV" determinerCode="INSTANCE">
      <!-- 发送者ID -->
      <id>
        <item root="2.16.156.10011.2.5.1.3" extension="@222"/>
      </id>
    </device>
  </sender>
  <controlActProcess classCode="CACT" moodCode="EVN">
    <subject typeCode="SUBJ">
      <placerGroup classCode="GROUPER" moodCode="RQO">
        <!--医嘱开立信息-->
        <author typeCode="AUT" contextControlCode="OP">
          <!--医嘱开立日期时间-->
          <time value="20241010100303"/>
        </author>
      </placerGroup>
    </subject>
  </controlActProcess>
  <!--签名编码（固定值S）-->
  <signatureCode code="S"/>
  <!--医嘱开立医师签名-->
  <signatureText value="李医生"/>
  <assignedEntity classCode="ASSIGNED">
    <!--医嘱开立医师工号-->
    <id>
      <item root="2.16.156.10011.1.4" extension="300868"/>
    </id>
  </assignedEntity>
</POOR_IN200901UV>
```

```

</id>
<assignedPerson classCode="PSN" determinerCode="INSTANCE">
  <!--医嘱开立医师姓名-->
  <name xsi:type="BAG_EN">
    <item>
      <part value="李医生"/>
    </item>
  </name>
</assignedPerson>
<representedOrganization classCode="ORG" determinerCode="INSTANCE">
  <!--医嘱开立科室编码-->
  <id>
    <item root="2.16.156.10011.1.26" extension="1234567890"/>
  </id>
  <!--医嘱开立科室名称-->
  <name xsi:type="BAG_EN">
    <item>
      <part value="呼吸内科"/>
    </item>
  </name>
</representedOrganization>
</assignedEntity>
</author>
<!--医嘱审核信息-->
<verifier typeCode="VRF" contextControlCode="OP">
  <!--医嘱审核日期时间-->
  <time value="20241010100303"/>
  <!--签名编码（固定值S）-->
  <signatureCode code="S"/>
  <!--医嘱审核医师签名-->
  <signatureText value="王医生"/>
  <assignedEntity classCode="ASSIGNED">
    <!--医嘱审核医师工号-->
    <id>
      <item root="2.16.156.10011.1.4" extension="300999"/>
    </id>
    <assignedPerson classCode="PSN" determinerCode="INSTANCE">
      <!--医嘱审核医师姓名-->
      <name xsi:type="BAG_EN">
        <item>
          <part value="王五"/>
        </item>
      </name>
    </assignedPerson>
  </assignedEntity>
</verifier>
<component2>
  <!--医嘱序号-->
  <sequenceNumber value="1"/>
  <substanceAdministrationRequest classCode="SBADM" moodCode="RQO">
    <!--医嘱编码-->
    <id root="2.16.156.10011.1.28" extension="OBS001"/>
    <!--医嘱项目类型代码-->
    <code code="1" codeSystem="2.16.156.10011.2.3.1.268" codeSystemName="医嘱项目类型
    代码表">
      <displayName value="药品类医嘱"/>
    </code>
    <!--医嘱项目内容-->
    <text/>
    <!--医嘱状态-->
    <statusCode code="active"/>
    <!--医嘱有效期间:医嘱开始日期时间/医嘱结束日期时间-->

```



```

    <effectiveTime xsi:type="QSC_TS" validTimeLow="20241010100303"
validTimeHigh="20241010100303">
      <!-- 医嘱执行频率编码/医嘱执行频率名称 -->
      <code code="BID" codeSystem="2.16.156.10011.2.5.1.13" codeSystemName="药物使
用频次代码表">
        <displayName value="2/日(8am-4pm)"/>
      </code>
    </effectiveTime>
    <!-- 用药途径 -->
    <routeCode code="1" codeSystem="2.16.156.10011.2.3.1.158" codeSystemName="用药途径
代码表">
      <displayName value="口服"/>
    </routeCode>
    <!-- 药物使用次剂量 -->
    <doseQuantity value="20" unit="mg"/>
    <!-- 药物使用总剂量 -->
    <doseCheckQuantity xsi:type="DSET_RTO">
      <item>
        <numerator xsi:type="PQ" unit="g" value="1"/>
        <denominator xsi:type="PQ" unit="d" value="1"/>
      </item>
    </doseCheckQuantity>
    <!-- 药品剂型 -->
    <administrationUnitCode code="1" codeSystem="2.16.156.10011.2.3.1.211"
codeSystemName="药品剂型代码表">
      <displayName value="片剂（素片、压制片），浸膏片，非包衣片"/>
    </administrationUnitCode>
    <!-- 药物信息 -->
    <consumable2 typeCode="CSM">
      <manufacturedProduct1 classCode="MANU">
        <!-- 包装序号 -->
        <id extension="1234"/>
        <manufacturedProduct classCode="MMAT" determinerCode="KIND">
          <!-- 药物编码 -->
          <code code="201056" codeSystem="2.16.156.10011.2.5.1.14"/>
          <name xsi:type="BAG_EN">
            <item>
              <!-- 药物名称 -->
              <part value="葡萄糖酸钙"/>
            </item>
          </name>
          <asContent classCode="CONT">
            <quantity/>
            <containerPackagedProduct classCode="HOLD"
determinerCode="KIND">
              <code/>
              <formCode/>
              <!-- 药物规格 -->
              <capacityQuantity unit="g/片" value="1"/>
            </containerPackagedProduct>
          </asContent>
        </manufacturedProduct>
        <!-- 药物所属医保信息 -->
        <subjectOf3 typeCode="SBJ">
          <policy classCode="POLICY" moodCode="EVN">
            <!-- 药物医保类别编码/药物医保类别名称 -->
            <code code="01">
              <displayName value="甲类"/>
            </code>
          </policy>
        </subjectOf3>
      </manufacturedProduct1>

```

```

</consumable2>
<location typeCode="LOC">
  <serviceDeliveryLocation classCode="DSDLLOC">
    <location classCode="PLC" determinerCode="INSTANCE">
      <!-- 执行科室编码 -->
      <id>
        <item root="2.16.156.10011.1.26" extension="001"/>
      </id>
      <!-- 执行科室名称 -->
      <name xsi:type="BAG_EN">
        <item>
          <part value="呼吸内科"/>
        </item>
      </name>
    </location>
  </serviceDeliveryLocation>
</location>
<!-- 父医嘱编码(没有父医嘱可以没有此occurrenceOf节点) -->
<occurrenceOf>
  <parentRequestReference classCode="GROUPER">
    <id extension="31657457"/>
  </parentRequestReference>
</occurrenceOf>
<!-- 医嘱类别 (1 长期医嘱 2 临时医嘱 9 其他) -->
<pertinentInformation typeCode="PERT" contextConductionInd="false">
  <observation classCode="OBS " moodCode="EVN">
    <code code="DE06.00.286.00" codeSystem="2.16.156.10011.2.2.1"
codeSystemName="医嘱类别代码表" />
    <!-- 医嘱类别代码 -->
    <value xsi:type="CD" code="1" codeSystem="2.16.156.10011.2.3.2.58">
      <displayName value="长期医嘱"/>
    </value>
  </observation>
</pertinentInformation>
<!-- 领量(给药量)/领量单位(实际发药量由药房发药确定) -->
<supplyRequest classCode="SPLY" moodCode="RQO">
  <id/>
  <code/>
  <statusCode code="active"/>
  <!-- 领药量 -->
  <quantity value="1" unit="胶囊"/>
  <!-- 开始时间/停止时间(可以都没有值) -->
  <expectedUseTime validTimeLow="201112311010" validTimeHigh="" />
</supplyRequest>
</component2>
<!-- 医嘱备注信息 -->
<subjectOf6 typeCode="SUBJ" contextConductionInd="false">
  <seperatableInd value="false"/>
  <annotation>
    <!-- 医嘱备注信息 -->
    <text value="对下达医嘱的补充说明和注意事项提示"/>
    <statusCode code="completed"/>
    <author>
      <assignedEntity classCode="ASSIGNED"/>
    </author>
  </annotation>
</subjectOf6>
</substanceAdministrationRequest>
</component2>
<!-- 就医信息 -->
<componentOf1 contextConductionInd="false">
  <encounter classCode="ENC" moodCode="EVN">
    <id>

```

```

        <!-- 就诊次数 -->
        <item extension="2" root="2.16.156.10011.2.5.1.8"/>
        <!-- 就诊流水号 -->
        <item extension="123456" root="2.16.156.10011.2.5.1.9"/>
    </id>
    <!--患者类型代码-->
    <code codeSystem="2.16.156.10011.2.3.1.271" code="01">
        <!-- 患者类型名称 -->
        <displayName value="门诊/住院/体检"/>
    </code>
    <statusCode code="active"/>
    <subject typeCode="SBJ">
        <patient classCode="PAT">
            <id>
                <!-- 域ID -->
                <item root="2.16.156.10011.2.5.1.5" extension="01"/>
                <!--患者编码-->
                <item root="2.16.156.10011.2.5.1.4" extension="HA201102113366666"/>
                <!--门（急）诊号 -->
                <item root="2.16.156.10011.1.10" extension="E10000000"/>
                <!--住院号-->
                <item root="2.16.156.10011.1.12" extension="HA201102113366666"/>
            </id>
            <!--患者电话号码-->
            <telecom xsi:type="BAG_TEL">
                <item value="13578945678"/>
            </telecom>
            <!--患者角色状态-->
            <statusCode code="active"/>
            <patientPerson classCode="PSN" determinerCode="INSTANCE">
                <!--患者身份证件号码-->
                <id>
                    <item root="2.16.156.10011.1.3"
extension="420102199204132564"/>
                </id>
                <name xsi:type="BAG_EN">
                    <item>
                        <part value="王五"/>
                    </item>
                </name>
                <!--性别-->
                <administrativeGenderCode code="1"
codeSystem="2.16.156.10011.2.3.3.4" codeSystemName="生理性别代码表（GB/T 2261.1）">
                    <displayName value="男性"/>
                </administrativeGenderCode>
                <!--出生日期-->
                <birthTime value="19570323"/>
                <asOtherIDs classCode="ROL">
                    <!--健康档案编号-->
                    <id>
                        <item root="2.16.156.10011.1.2"
extension="12345678901234567"/>
                    </id>
                    <!--居民健康卡号-->
                    <item root="2.16.156.10011.1.19" extension="1234567890"/>
                </asOtherIDs>
                <scopingOrganization classCode="ORG "
determinerCode="INSTANCE " xsi:nil="true"/>
            </patientPerson>
        </patient>
    </subject>
    <!--住院位置-->

```

```

<location typeCode="LOC">
  <time/>
  <serviceDeliveryLocation classCode="SDLOC">
    <location classCode="PLC" determinerCode="INSTANCE">
      <!--病床号-->
      <id>
        <item root="2.16.156.10011.1.22" extension="001"/>
      </id>
      <name xsi:type="BAG_EN">
        <item>
          <part value="1床"/>
        </item>
      </name>
      <asLocatedEntityPartOf classCode="LOCE">
        <location classCode="PLC" determinerCode="INSTANCE">
          <!--病房号-->
          <id>
            <item root="2.16.156.10011.1.21" extension="001"/>
          </id>
          <name xsi:type="BAG_EN">
            <item>
              <part value="205室"/>
            </item>
          </name>
        </location>
      </asLocatedEntityPartOf>
    </location>
    <serviceProviderOrganization classCode="ORG"
determinerCode="INSTANCE">
      <!--科室名称-->
      <id>
        <item root="2.16.156.10011.1.26" extension="001"/>
      </id>
      <name xsi:type="BAG_EN">
        <item>
          <part value="呼吸内科"/>
        </item>
      </name>
      <asOrganizationPartOf classCode="PART">
        <!-- 病区名称 -->
        <wholeOrganization classCode="ORG"
determinerCode="INSTANCE">
          <id>
            <item root="2.16.156.10011.1.27" extension="001"/>
          </id>
          <name xsi:type="BAG_EN">
            <item>
              <part value="呼吸科病区"/>
            </item>
          </name>
        </wholeOrganization>
      </asOrganizationPartOf>
    </serviceProviderOrganization>
  </serviceDeliveryLocation>
</location>
</encounter>
</componentOf1>
</placerGroup>
</subject>
</controlActProcess>
</POOR_IN200901UV>

```

A. 1.2 医嘱信息新增服务-响应消息（成功）

```

<MCCI_IN000002UV01 xmlns="https://www.chiss.org.cn" xmlns:xsi="http://www.w3.org/2001/XMLSchema-instance"
ITSVersion="XML_1.0" xsi:schemaLocation="https://www.chiss.org.cn
https://www.chiss.org.cn/HL7V3Message/multicacheschemas/MCCI_IN000002UV01.xsd">
  <id root="2.16.156.10011.2.5.1.1" extension="22a0f9e0-4454-11dc-a6be-3603d6866811"/>
  <creationTime value="20170106151903"/>
  <interactionId root="2.16.156.10011.2.5.1.2" extension="MCCI_IN000002UV01"/>
  <processingCode code="P"/>
  <processingModeCode/>
  <acceptAckCode code="AL"/>
  <receiver typeCode="RCV">
    <device classCode="DEV" determinerCode="INSTANCE">
      <id>
        <item root="2.16.156.10011.2.5.1.3" extension="@111"/>
      </id>
    </device>
  </receiver>
  <sender typeCode="SND">
    <device classCode="DEV" determinerCode="INSTANCE">
      <id>
        <item root="2.16.156.10011.2.5.1.3" extension="@222"/>
      </id>
    </device>
  </sender>
  <acknowledgement typeCode="AA">
    <!--请求消息流水号-->
    <targetMessage>
      <id root="2.16.156.10011.2.5.1.1" extension="22a0f9e0-4454-11dc-a6be-3603d6866807"/>
    </targetMessage>
    <acknowledgementDetail>
      <text value="处理结果说明"/>
    </acknowledgementDetail>
  </acknowledgement>
</MCCI_IN000002UV01>

```

A. 1.3 医嘱信息新增服务-响应消息（异常）

```

<MCCI_IN000002UV01 xmlns="https://www.chiss.org.cn" xmlns:xsi="http://www.w3.org/2001/XMLSchema-instance"
ITSVersion="XML_1.0" xsi:schemaLocation="https://www.chiss.org.cn
https://www.chiss.org.cn/HL7V3Message/multicacheschemas/MCCI_IN000002UV01.xsd">
  <id root="2.16.156.10011.2.5.1.1" extension="22a0f9e0-4454-11dc-a6be-3603d6866811"/>
  <creationTime value="20170106151903"/>
  <interactionId root="2.16.156.10011.2.5.1.2" extension="MCCI_IN000002UV01"/>
  <processingCode code="P"/>
  <processingModeCode/>
  <acceptAckCode code="AL"/>
  <receiver typeCode="RCV">
    <device classCode="DEV" determinerCode="INSTANCE">
      <id>
        <item root="2.16.156.10011.2.5.1.3" extension="@111"/>
      </id>
    </device>
  </receiver>
  <sender typeCode="SND">
    <device classCode="DEV" determinerCode="INSTANCE">
      <id>
        <item root="2.16.156.10011.2.5.1.3" extension="@222"/>
      </id>
    </device>
  </sender>
  <acknowledgement typeCode="AE">
    <!--请求消息流水号-->
    <targetMessage>
      <id root="2.16.156.10011.2.5.1.1" extension="22a0f9e0-4454-11dc-a6be-3603d6866807"/>
    </targetMessage>
    <acknowledgementDetail>

```

```

    <text value="处理结果说明"/>
  </acknowledgementDetail>
</acknowledgement>
</MCCI_IN000002UV01>

```

A.2 医嘱信息更新服务

A.2.1 医嘱信息更新服务-请求消息

```

<POOR_IN200902UV xmlns="https://www.chiss.org.cn" xmlns:xsi="http://www.w3.org/2001/XMLSchema-instance"
ITSVersion="XML 1.0" xsi:schemaLocation="https://www.chiss.org.cn
https://www.chiss.org.cn/HL7V3Message/multicacheschemas/POOR_IN200902UV.xsd">
  <!-- 消息流水号 -->
  <id root="2.16.156.10011.2.5.1.1" extension="22a0f9e0-4454-11dc-a6be-3603d6866807"/>
  <!-- 消息创建时间 -->
  <creationTime value="20241010110000"/>
  <!-- 消息的服务标识-->
  <interactionId root="2.16.156.10011.2.5.1.2" extension="POOR_IN200902UV"/>
  <!--处理代码，标识此消息是否是产品、训练、调试系统的一部分。D：调试；P：产品；T：训练 -->
  <processingCode code="P"/>
  <!-- 消息处理模式：A(Archive); I(Initial load); R(Restore from archive); T(Current
  processing) -->
  <processingModeCode/>
  <!-- 消息应答：AL(Always); ER(Error/reject only); NE(Never) -->
  <acceptAckCode code="AL"/>
  <!-- 接受者 -->
  <receiver typeCode="RCV">
    <device classCode="DEV" determinerCode="INSTANCE">
      <!-- 接受者ID -->
      <id>
        <item root="2.16.156.10011.2.5.1.3" extension="@111"/>
      </id>
    </device>
  </receiver>
  <!-- 发送者 -->
  <sender typeCode="SND">
    <device classCode="DEV" determinerCode="INSTANCE">
      <!-- 发送者ID -->
      <id>
        <item root="2.16.156.10011.2.5.1.3" extension="@222"/>
      </id>
    </device>
  </sender>
  <controlActProcess classCode="CACT" moodCode="EVN">
    <subject typeCode="SUBJ">
      <placerGroup classCode="GROUPER" moodCode="RQO">
        <!--医嘱开立信息-->
        <author typeCode="AUT" contextControlCode="OP">
          <!--医嘱开立日期时间-->
          <time value="20241010100303"/>
          <!--签名编码（固定值S）-->
          <signatureCode code="S"/>
          <!--医嘱开立医师签名-->
          <signatureText value="李医生"/>
          <assignedEntity classCode="ASSIGNED">
            <!--医嘱开立医师工号-->
            <id>
              <item root="2.16.156.10011.1.4" extension="300626"/>
            </id>
            <assignedPerson classCode="PSN" determinerCode="INSTANCE">
              <!--医嘱开立医师姓名-->
              <name xsi:type="BAG_EN">

```

```

        <item>
          <part value="李医生"/>
        </item>
      </name>
    </assignedPerson>
    <representedOrganization classCode="ORG" determinerCode="INSTANCE">
      <!--医嘱开立科室编号-->
      <id>
        <item root="2.16.156.10011.1.26" extension="1234567890"/>
      </id>
      <!--医嘱开立科室名称-->
      <name xsi:type="BAG_EN">
        <item>
          <part value="呼吸内科"/>
        </item>
      </name>
    </representedOrganization>
  </assignedEntity>
</author>
<!--医嘱审核信息-->
<verifier typeCode="VRF" contextControlCode="OP">
  <!--医嘱审核日期时间-->
  <time value="20241010100303"/>
  <!--签名编码（固定值S）-->
  <signatureCode code="S"/>
  <!--医嘱审核医师签名-->
  <signatureText value="王医生"/>
  <assignedEntity classCode="ASSIGNED">
    <!--医嘱审核医师工号-->
    <id>
      <item root="2.16.156.10011.1.4" extension="300686"/>
    </id>
    <assignedPerson classCode="PSN" determinerCode="INSTANCE">
      <!--医嘱审核医师姓名-->
      <name xsi:type="BAG_EN">
        <item>
          <part value="王五"/>
        </item>
      </name>
    </assignedPerson>
  </assignedEntity>
</verifier>
<component2>
  <!--医嘱序号-->
  <sequenceNumber value="1"/>
  <substanceAdministrationRequest classCode="SBADM" moodCode="RQO">
    <!--医嘱编码-->
    <id root="2.16.156.10011.1.28" extension="OBS001"/>
    <!--医嘱项目类型代码-->
    <code code="1" codeSystem="2.16.156.10011.2.3.1.268" codeSystemName="医嘱项目类型
代码表">
      <displayName value="药品类医嘱"/>
    </code>
    <!--医嘱项目内容-->
    <text value="硝苯地平片"/>
    <!--医嘱状态-->
    <statusCode code="active"/>
    <!--医嘱有效期间:医嘱开始日期时间/医嘱结束日期时间-->
    <effectiveTime xsi:type="QSC_TS" validTimeLow="20110202030303"
validTimeHigh="20110203030303">
      <!-- 医嘱执行频率编码/医嘱执行频率名称 -->
      <code code="BID" codeSystem="2.16.156.10011.2.5.1.13" codeSystemName="药物使

```

用频次代码表">

代码表">

codeSystemName="药品剂型代码表">

determinerCode="KIND">

```

        <displayName value="2/日(8am-4pm)"/>
    </code>
</effectiveTime>
<routeCode code="1" codeSystem="2.16.156.10011.2.3.1.158" codeSystemName="用药途径
代码表">
    <displayName value="口服"/>
</routeCode>
<!-- 药物使用次剂量 -->
<doseQuantity value="20" unit="mg"/>
<!-- 药物使用总剂量 -->
<doseCheckQuantity xsi:type="DSET_RTO">
    <item>
        <numerator xsi:type="PQ" unit="g" value="1"/>
        <denominator xsi:type="PQ" unit="d" value="1"/>
    </item>
</doseCheckQuantity>
<!-- 药品剂型 -->
<administrationUnitCode code="1" codeSystem="2.16.156.10011.2.3.1.211"
codeSystemName="药品剂型代码表">
    <displayName value="片剂（素片、压制片），浸膏片，非包衣片"/>
</administrationUnitCode>
<!-- 药物信息 -->
<consumable2 typeCode="CSM">
    <manufacturedProduct1 classCode="MANU">
        <!-- 包装序号 -->
        <id extension="1234"/>
        <manufacturedProduct classCode="MMAT" determinerCode="KIND">
            <!-- 药物编码 -->
            <code code="201056" codeSystem="2.16.156.10011.2.5.1.14"/>
            <name xsi:type="BAG_EN">
                <item>
                    <!-- 药物名称 -->
                    <part value="葡萄糖酸钙"/>
                </item>
            </name>
            <asContent classCode="CONT">
                <quantity/>
                <containerPackagedProduct classCode="HOLD"
determinerCode="KIND">
                    <code/>
                    <formCode/>
                    <!-- 药物规格 -->
                    <capacityQuantity unit="g/片" value="1"/>
                </containerPackagedProduct>
            </asContent>
        </manufacturedProduct>
        <!-- 药物所属医保信息 -->
        <subjectOf3 typeCode="SBJ">
            <policy classCode="POLICY" moodCode="EVN">
                <!-- 药物医保类别编码/药物医保类别名称 -->
                <code code="01">
                    <displayName value="甲类"/>
                </code>
            </policy>
        </subjectOf3>
    </manufacturedProduct1>
</consumable2>
<location typeCode="LOC">
    <serviceDeliveryLocation classCode="DSDLOC">
        <location classCode="PLC" determinerCode="INSTANCE">
            <!-- 执行科室编码 -->

```



```

        <id>
            <item root="2.16.156.10011.1.26" extension="001"/>
        </id>
        <!-- 执行科室名称 -->
        <name xsi:type="BAG_EN">
            <item>
                <part value="呼吸内科"/>
            </item>
        </name>
    </location>
</serviceDeliveryLocation>
</location>
<!-- 父医嘱编码(没有父医嘱可以没有此occurrenceOf节点) -->
<occurrenceOf>
    <parentRequestReference classCode="GROUPER">
        <id extension="31657457"/>
    </parentRequestReference>
</occurrenceOf>
<!-- 医嘱类别 (1 长期医嘱 2 临时医嘱 9 其他) -->
<pertinentInformation typeCode="PERT" contextConductionInd="false">
    <observation classCode="OBS " moodCode="EVN">
        <code code="DE06.00.286.00" codeSystem="2.16.156.10011.2.2.1"
codeSystemName="卫生信息数据元目录" />
        <!-- 医嘱类别代码-->
        <value xsi:type="CD" code="1" codeSystem="2.16.156.10011.2.3.2.58"
codeSystemName="卫生信息数据元目录">
            <displayName value="长期医嘱"/>
        </value>
    </observation>
</pertinentInformation>
<!-- 分量(给药量)/分量单位(实际发药量由药房发药确定) -->
<supplyRequest classCode="SPLY" moodCode="RQO">
    <id/>
    <code/>
    <statusCode code="active"/>
    <!-- 草药时对应付数-->
    <quantity value="1" unit="胶囊"/>
    <!-- 开始时间/停止时间(可以都没有值) -->
    <expectedUseTime validTimeLow="201112311010" validTimeHigh=""/>
</supplyRequest>
</component2>
<!-- 医嘱备注信息-->
<subjectOf6 typeCode="SUBJ" contextConductionInd="false">
    <seperatableInd value="false"/>
    <annotation>
        <!-- 医嘱备注信息-->
        <text value="对下达医嘱的补充说明和注意事项提示"/>
        <statusCode code="completed"/>
        <author>
            <assignedEntity classCode="ASSIGNED"/>
        </author>
    </annotation>
</subjectOf6>
</substanceAdministrationRequest>
</component2>
<!-- 就医信息-->
<componentOf1 contextConductionInd="false">
    <encounter classCode="ENC" moodCode="EVN">
        <id>
            <!-- 就诊次数 -->
            <item extension="2" root="2.16.156.10011.2.5.1.8"/>
            <!-- 就诊流水号 -->
            <item extension="123456" root="2.16.156.10011.2.5.1.9"/>

```

```

</id>
<!-- 患者类型代码-->
<code codeSystem="1.2.156.112635.1.1.80" code="01">
  <!-- 患者类型名称 -->
  <displayName value="门诊/住院/体检"/>
</code>
<statusCode code="active"/>
<subject typeCode="SBJ">
  <patient classCode="PAT">
    <id>
      <!-- 患者编码-->
      <item root="2.16.156.10011.2.5.1.4" extension="HA201102113366666"/>
      <!-- 门（急）诊号 -->
      <item root="2.16.156.10011.1.10" extension="E10000000"/>
      <!-- 住院号-->
      <item root="2.16.156.10011.1.12" extension="HA201102113366666"/>
    </id>
    <!-- 患者电话号码-->
    <telecom xsi:type="BAG_TEL">
      <item value="13578945678"/>
    </telecom>
    <!-- 患者角色状态-->
    <statusCode code="active"/>
    <patientPerson classCode="PSN" determinerCode="INSTANCE">
      <!-- 患者身份证件号码-->
      <id>
        <item root="2.16.156.10011.1.3"
extension="420103198706012345"/>
      </id>
      <name xsi:type="BAG_EN">
        <item>
          <part value="王五"/>
        </item>
      </name>
      <!-- 性别-->
      <administrativeGenderCode code="1"
codeSystem="2.16.156.10011.2.3.3.4" codeSystemName="生理性别代码表（GB/T 2261.1）">
        <displayName value="男性"/>
      </administrativeGenderCode>
      <!-- 出生日期-->
      <birthTime value="19570323"/>
      <asOtherIDs classCode="ROL">
        <!-- 健康档案编号-->
        <id>
          <item root="2.16.156.10011.1.2"
extension="12345678901234567"/>
          <!-- 居民健康卡号-->
          <item root="2.16.156.10011.1.19" extension="1234567890"/>
        </id>
        <scopingOrganization classCode="ORG "
determinerCode="INSTANCE " xsi:nil="true"/>
      </asOtherIDs>
    </patientPerson>
  </patient>
</subject>
<!-- 住院位置-->
<location typeCode="LOC">
  <time/>
  <serviceDeliveryLocation classCode="SDLOC">
    <location classCode="PLC" determinerCode="INSTANCE">
      <!-- 病床号-->
      <id>
        <item root="2.16.156.10011.1.22" extension="001"/>
      </id>
    </location>
  </serviceDeliveryLocation>
</location>

```

```

</id>
<name xsi:type="BAG_EN">
  <item>
    <part value="1床"/>
  </item>
</name>
<asLocatedEntityPartOf classCode="LOCE">
  <location classCode="PLC" determinerCode="INSTANCE">
    <!--病房号-->
    <id>
      <item root="2.16.156.10011.1.21" extension="001"/>
    </id>
    <name xsi:type="BAG_EN">
      <item>
        <part value="205室"/>
      </item>
    </name>
  </location>
</asLocatedEntityPartOf>
</location>
<serviceProviderOrganization classCode="ORG"
determinerCode="INSTANCE">
  <!--科室名称-->
  <id>
    <item root="2.16.156.10011.1.26" extension="001"/>
  </id>
  <name xsi:type="BAG_EN">
    <item>
      <part value="呼吸内科"/>
    </item>
  </name>
  <asOrganizationPartOf classCode="PART">
    <!-- 病区名称 -->
    <wholeOrganization classCode="ORG"
determinerCode="INSTANCE">
      <id>
        <item root="2.16.156.10011.1.27" extension="001"/>
      </id>
      <name xsi:type="BAG_EN">
        <item>
          <part value="呼吸科病区"/>
        </item>
      </name>
    </wholeOrganization>
  </asOrganizationPartOf>
</serviceProviderOrganization>
</serviceDeliveryLocation>
</location>
</encounter>
</componentOf1>
</placerGroup>
</subject>
</controlActProcess>
</POOR_IN200902UV>

```

A. 2.2 医嘱信息更新服务-响应消息（成功）

```

<MCCI_IN000002UV01 xmlns="https://www.chiss.org.cn" xmlns:xsi="http://www.w3.org/2001/XMLSchema-instance"
ITSVersion="XML_1.0" xsi:schemaLocation="https://www.chiss.org.cn
https://www.chiss.org.cn/HL7V3Message/multicacheschemas/MCCI_IN000002UV01.xsd">
  <id root="2.16.156.10011.2.5.1.1" extension="22a0f9e0-4454-11dc-a6be-3603d68668011"/>
  <creationTime value="20170106151903"/>
  <interactionId root="2.16.156.10011.2.5.1.2" extension="MCCI_IN000002UV01"/>
  <processingCode code="P"/>

```

```

<processingModeCode/>
<acceptAckCode code="AL"/>
<receiver typeCode="RCV">
  <device classCode="DEV" determinerCode="INSTANCE">
    <id>
      <item root="2.16.156.10011.2.5.1.3" extension="@111"/>
    </id>
  </device>
</receiver>
<sender typeCode="SND">
  <device classCode="DEV" determinerCode="INSTANCE">
    <id>
      <item root="2.16.156.10011.2.5.1.3" extension="@222"/>
    </id>
  </device>
</sender>
<acknowledgement typeCode="AA">
  <!--请求消息流水号-->
  <targetMessage>
    <id root="2.16.156.10011.2.5.1.1" extension="22a0f9e0-4454-11dc-a6be-3603d6866807"/>
  </targetMessage>
  <acknowledgementDetail>
    <text value="处理结果说明"/>
  </acknowledgementDetail>
</acknowledgement>
</MCCI_IN000002UV01>

```

A. 2.3 医嘱信息更新服务-响应消息（异常）

```

<MCCI_IN000002UV01 xmlns="https://www.chiss.org.cn" xmlns:xsi="http://www.w3.org/2001/XMLSchema-instance"
ITSVersion="XML_1.0" xsi:schemaLocation="https://www.chiss.org.cn
https://www.chiss.org.cn/HL7V3Message/multicacheschemas/MCCI_IN000002UV01.xsd">
  <id root="2.16.156.10011.2.5.1.1" extension="22a0f9e0-4454-11dc-a6be-3603d6866818"/>
  <creationTime value="20170106151903"/>
  <interactionId root="2.16.156.10011.2.5.1.2" extension="MCCI_IN000002UV01"/>
  <processingCode code="P"/>
  <processingModeCode/>
  <acceptAckCode code="AL"/>
  <receiver typeCode="RCV">
    <device classCode="DEV" determinerCode="INSTANCE">
      <id>
        <item root="2.16.156.10011.2.5.1.3" extension="@111"/>
      </id>
    </device>
  </receiver>
  <sender typeCode="SND">
    <device classCode="DEV" determinerCode="INSTANCE">
      <id>
        <item root="2.16.156.10011.2.5.1.3" extension="@222"/>
      </id>
    </device>
  </sender>
  <acknowledgement typeCode="AE">
    <!--请求消息流水号-->
    <targetMessage>
      <id root="2.16.156.10011.2.5.1.1" extension="22a0f9e0-4454-11dc-a6be-3603d6866807"/>
    </targetMessage>
    <acknowledgementDetail>
      <text value="处理结果说明"/>
    </acknowledgementDetail>
  </acknowledgement>
</MCCI_IN000002UV01>

```

A. 3 医嘱信息查询服务

A.3.1 医嘱信息查询服务-请求消息

```

<QUMT_IN020030UV01 xmlns="https://www.chiss.org.cn" xmlns:xsi="http://www.w3.org/2001/XMLSchema-instance"
ITSVersion="XML_1.0" xsi:schemaLocation="https://www.chiss.org.cn
https://www.chiss.org.cn/HL7V3Message/multicacheschemas/QUMT_IN020030UV01.xsd">
  <!-- 消息流水号 -->
  <id root="2.16.156.10011.2.5.1.1" extension="22a0f9e0-4454-11dc-a6be-3603d6866807"/>
  <!-- 消息创建时间 -->
  <creationTime value="20120106110000"/>
  <!-- 消息的服务标识-->
  <interactionId root="2.16.156.10011.2.5.1.2" extension="QUMT_IN020030UV01"/>
  <!--处理代码，标识此消息是否是产品、训练、调试系统的一部分。D：调试；P：产品；T：训练 -->
  <processingCode code="P"/>
  <!-- 消息处理模式：A(Archive)；I(Initial load)；R(Restore from archive)；T(Current
  processing) -->
  <processingModeCode/>
  <!-- 消息应答：AL(Always)；ER(Error/reject only)；NE(Never) -->
  <acceptAckCode code="AL"/>
  <!-- 接受者 -->
  <receiver typeCode="RCV">
    <device classCode="DEV" determinerCode="INSTANCE">
      <!-- 接受者ID -->
      <id>
        <item root="2.16.156.10011.2.5.1.3" extension="@111"/>
      </id>
    </device>
  </receiver>
  <!-- 发送者 -->
  <sender typeCode="SND">
    <device classCode="DEV" determinerCode="INSTANCE">
      <!-- 发送者ID -->
      <id>
        <item root="2.16.156.10011.2.5.1.3" extension="@222"/>
      </id>
    </device>
  </sender>
  <!-- 封装的消息内容 -->
  <controlActProcess classCode="CACT" moodCode="EVN">
    <queryByParameter>
      <statusCode code="new"/>
      <queryByParameterPayload>
        <statusCode code="new"/>
        <!--医嘱信息-->
        <actId>
          <value>
            <!--医嘱编号 -->
            <item extension="100023925522" root="2.16.156.10011.1.28"/>
          </value>
        </actId>
        <!--医嘱开立医师工号-->
        <authorId>
          <value>
            <item extension="300626" root="2.16.156.10011.1.4"/>
          </value>
        </authorId>
        <!--医嘱有效期间-->
        <effectiveTime>
          <value>
            <low value="20130303040404"/>
            <high value="20130303050505"/>
          </value>
          <semanticsText value="EffectiveTime"/>
        </effectiveTime>
      </queryByParameterPayload>
    </queryByParameter>
  </controlActProcess>

```

```

        <!--患者编号-->
        <patientId>
            <value>
                <item extension="12345678901w" root="2.16.156.10011.2.5.1.4"/>
            </value>
        </patientId>
    </queryByParameterPayload>
</queryByParameter>
</controlActProcess>
</QUMT_IN020030UV01>

```

A.3.2 医嘱信息查询服务-响应消息（成功）

```

<QUMT_IN020040UV01 xmlns="https://www.chiss.org.cn" xmlns:xsi="http://www.w3.org/2001/XMLSchema-instance"
ITSVersion="XML_1.0" xsi:schemaLocation="https://www.chiss.org.cn
https://www.chiss.org.cn/HL7V3Message/multicacheschemas/QUMT_IN020040UV01.xsd">
    <id root="2.16.156.10011.2.5.1.1" extension="22a0f9e0-4454-11dc-a6be-3603d6866811"/>
    <creationTime value="20130116112855"/>
    <interactionId root="2.16.156.10011.2.5.1.2" extension="QUMT_IN020040PL"/>
    <processingCode code="P"/>
    <processingModeCode code="I"/>
    <acceptAckCode code="AL"/>
    <receiver typeCode="RCV">
        <device classCode="DEV" determinerCode="INSTANCE">
            <id>
                <item root="2.16.156.10011.2.5.1.3" extension="2.16.156.10011.0.1.1"/>
            </id>
        </device>
    </receiver>
    <sender typeCode="SND">
        <device classCode="DEV" determinerCode="INSTANCE">
            <id>
                <item root="2.16.156.10011.2.5.1.3" extension="2.16.156.10011.0.1.2"/>
            </id>
        </device>
    </sender>
    <acknowledgement typeCode="AA">
        <targetMessage>
            <id root="2.16.156.10011.2.5.1.1" extension="22a0f9e0-4454-11dc-a6be-3603d6866807"/>
        </targetMessage>
        <acknowledgementDetail>
            <text value="处理结果说明"/>
        </acknowledgementDetail>
    </acknowledgement>
    <controlActProcess classCode="CACT" moodCode="EVN">
        <subject typeCode="SUBJ">
            <placerGroup classCode="GROUPER" moodCode="RQO">
                <!--医嘱开立信息-->
                <author typeCode="AUT" contextControlCode="OP">
                    <!--医嘱开立日期时间-->
                    <time value="20120202030303"/>
                    <signatureCode code="S"/>
                    <!--医嘱开立医师签名-->
                    <signatureText value="李医生"/>
                    <assignedEntity classCode="ASSIGNED">
                        <!--医嘱开立医师工号-->
                        <id>
                            <item root="2.16.156.10011.1.4" extension="300626"/>
                        </id>
                        <assignedPerson classCode="PSN" determinerCode="INSTANCE">
                            <!--医嘱开立医师姓名-->
                            <name xsi:type="BAG_EN">
                                <item>
                                    <part value="李医生"/>
                                </item>
                            </name>
                        </assignedPerson>
                    </assignedEntity>
                </author>
            </placerGroup>
        </subject>
    </controlActProcess>

```

```

        </item>
        </name>
    </assignedPerson>
    <representedOrganization classCode="ORG" determinerCode="INSTANCE">
        <!--医嘱开立科室编码-->
        <id>
            <item root="2.16.156.10011.1.26" extension="1234567890"/>
        </id>
        <!--医嘱开立科室名称-->
        <name xsi:type="BAG_EN">
            <item>
                <part value="呼吸内科"/>
            </item>
        </name>
    </representedOrganization>
</assignedEntity>
</author>
<!--医嘱审核信息-->
<verifier typeCode="VRF" contextControlCode="OP">
    <!--医嘱审核日期时间-->
    <time value="20120202030303"/>
    <!--签名编码（固定值S）-->
    <signatureCode code="S"/>
    <!--医嘱审核医师签名-->
    <signatureText value="王医生"/>
    <assignedEntity classCode="ASSIGNED">
        <!--医嘱审核医师工号-->
        <id>
            <item root="2.16.156.10011.1.4" extension="300898"/>
        </id>
        <assignedPerson classCode="PSN" determinerCode="INSTANCE">
            <!--医嘱审核医师-->
            <name xsi:type="BAG_EN">
                <item>
                    <part value="王五"/>
                </item>
            </name>
        </assignedPerson>
    </assignedEntity>
</verifier>
<component2>
    <!--医嘱序号-->
    <sequenceNumber value="1"/>
    <substanceAdministrationRequest classCode="SBADM" moodCode="RQO">
        <!--医嘱编号-->
        <id root="2.16.156.10011.1.28" extension="OBS001"/>
        <!--医嘱项目类型代码-->
        <code code="01" codeSystem="2.16.156.10011.2.3.1.268" codeSystemName="医嘱项目类
型代码表">
            <displayName value="药品类医嘱"/>
        </code>
        <!--医嘱项目内容-->
        <text value="硝苯地平片"></text>
        <!--医嘱状态-->
        <statusCode code="active"/>
        <!--医嘱有效期间:医嘱开始日期时间/医嘱结束日期时间-->
        <effectiveTime xsi:type="QSC_TS" validTimeLow="20110202030303"
validTimeHigh="20110203030303">
            <!-- 医嘱执行频率编码/医嘱执行频率名称 -->
            <code code="10" codeSystem="2.16.156.10011.2.3.1.267" codeSystemName="药物使
用频次代码表">
                <displayName value="qid"/>

```

代码表">

codeSystemName="药品剂型代码表">

determinerCode="KIND">

```

        </code>
    </effectiveTime>
    <!--用药途径 -->
    <routeCode code="1" codeSystem="2.16.156.10011.2.3.1.158" codeSystemName="用药途径
        <displayName value="口服"/>
    </routeCode>
    <!--药物使用次剂量-->
    <doseQuantity value="20" unit="mg"/>
    <!--药物使用总剂量 -->
    <doseCheckQuantity xsi:type="DSET_RTO">
        <item>
            <numerator xsi:type="PQ" unit="g" value="1"/>
            <denominator xsi:type="PQ" unit="d" value="1"/>
        </item>
    </doseCheckQuantity>
    <!--药品剂型 -->
    <administrationUnitCode code="01" codeSystem="2.16.156.10011.2.3.1.211"
codeSystemName="药品剂型代码表">
        <displayName value="片剂(素片、压制片),浸膏片,非包衣片"/>
    </administrationUnitCode>
    <!-- 药物信息 -->
    <consumable2 typeCode="CSM">
        <manufacturedProduct1 classCode="MANU">
            <!-- 包装序号 -->
            <id extension="1234"/>
            <manufacturedProduct classCode="MMAT" determinerCode="KIND">
                <!-- 药物编码 -->
                <code code="201056" codeSystem="2.16.156.10011.2.5.1.14"/>
                <name xsi:type="BAG_EN">
                    <item>
                        <!--药物名称-->
                        <part value="葡萄糖酸钙"/>
                    </item>
                </name>
                <asContent classCode="CONT">
                    <quantity/>
                    <containerPackagedProduct classCode="HOLD"
determinerCode="KIND">
                        <code/>
                        <formCode/>
                        <!--药物规格 -->
                        <capacityQuantity unit="g/片" value="1"/>
                    </containerPackagedProduct>
                </asContent>
            </manufacturedProduct>
            <!-- 药物所属医保信息 -->
            <subjectOf3 typeCode="SBJ">
                <policy classCode="POLICY" moodCode="EVN">
                    <!-- 药物医保类别编码/药物医保类别名称-->
                    <code code="01">
                        <displayName value="甲类"/>
                    </code>
                </policy>
            </subjectOf3>
        </manufacturedProduct1>
    </consumable2>
    <location typeCode="LOC">
        <serviceDeliveryLocation classCode="DSDLLOC">
            <location classCode="PLC" determinerCode="INSTANCE">
                <!-- 执行科室编号 -->
            </location>
        </serviceDeliveryLocation>
    </location>
    <id>

```



```

        <item root="2.16.156.10011.1.26" extension="001"/>
        </id>
        <!-- 执行科室名称 -->
        <name xsi:type="BAG_EN">
            <item>
                <part value="呼吸内科"/>
            </item>
        </name>
        </location>
        </serviceDeliveryLocation>
    </location>
    <!-- 父医嘱编号(没有父医嘱可以没有此occurrenceOf节点) -->
    <occurrenceOf>
        <parentRequestReference classCode="GROUPER">
            <id extension="31657457"/>
        </parentRequestReference>
    </occurrenceOf>
    <!-- 医嘱类别 (1 长期医嘱 2 临时医嘱 \ 9 其他) -->
    <pertinentInformation typeCode="PERT" contextConductionInd="false">
        <observation classCode="OBS " moodCode="EVN">
            <code code="DE06.00.286.00" codeSystem="2.16.156.10011.2.2.1"
codeSystemName="卫生信息数据元目录"/>
            <!-- 医嘱类别代码-->
            <value xsi:type="CD" code="1" codeSystem="2.16.156.10011.2.3.2.58"
codeSystemName="医嘱类别代码表">
                <displayName value="长期医嘱"/>
            </value>
        </observation>
    </pertinentInformation>
    <component2>
        <!-- 领量(给药量)/领量单位(实际发药量由药房发药确定) -->
        <supplyRequest classCode="SPLY" moodCode="RQO">
            <id/>
            <code/>
            <statusCode code="active"/>
            <!-- 领药量-->
            <quantity value="1" unit="胶囊"/>
            <!-- 开始时间/停止时间(可以都没有值) -->
            <expectedUseTime validTimeLow="201112311010" validTimeHigh=""/>
        </supplyRequest>
    </component2>
    <!-- 医嘱备注信息-->
    <subjectOf6 typeCode="SUBJ" contextConductionInd="false">
        <seperatableInd value="false"/>
        <annotation>
            <!-- 医嘱备注信息-->
            <text value="对下达医嘱的补充说明和注意事项提示"/>
            <statusCode code="completed"/>
            <author>
                <assignedEntity classCode="ASSIGNED"/>
            </author>
        </annotation>
    </subjectOf6>
    </substanceAdministrationRequest>
</component2>
<!-- 就医信息-->
<componentOf1 contextConductionInd="false">
    <encounter classCode="ENC" moodCode="EVN">
        <id>
            <!-- 就诊次数 -->
            <item extension="2" root="2.16.156.10011.2.5.1.8"/>
            <!-- 就诊流水号 -->
            <item extension="123456" root="2.16.156.10011.2.5.1.9"/>

```

```

</id>
<!--患者类型代码-->
<code code="3" codeSystem="2.16.156.10011.2.3.1.271" codeSystemName="患者类型代码
表">
    <displayName value="住院"/>
</code>
<statusCode code="active"/>
<subject typeCode="SBJ">
    <patient classCode="PAT">
        <id>
            <!--患者编号-->
            <item root="2.16.156.10011.2.5.1.4" extension="HA201102113366666"/>
            <!--门（急）诊号 -->
            <item root="2.16.156.10011.1.10" extension="E10000000"/>
            <!--住院号-->
            <item root="2.16.156.10011.1.12" extension="HA201102113366666"/>
        </id>
        <!--患者电话号码-->
        <telecom xsi:type="BAG_TEL">
            <item value="13578945678"/>
        </telecom>
        <!--患者角色状态-->
        <statusCode code="active"/>
        <patientPerson classCode="PSN" determinerCode="INSTANCE">
            <!--患者身份证件号码-->
            <id>
                <item root="2.16.156.10011.1.3"
extension="420109198706072564"/>
            </id>
            <name xsi:type="BAG_EN">
                <item>
                    <part value="王五"/>
                </item>
            </name>
            <!--性别-->
            <administrativeGenderCode code="1"
codeSystem="2.16.156.10011.2.3.3.4" codeSystemName="生理性别代码表(GB/T 2261.1)">
                <displayName value="男性"/>
            </administrativeGenderCode>
            <!--出生日期-->
            <birthTime value="19570323"/>
            <asOtherIDs classCode="ROL">
                <!--健康档案编号-->
                <id>
                    <item root="2.16.156.10011.1.2"
extension="12345678901234567"/>
                </id>
                <!--居民健康卡号-->
                <item root="2.16.156.10011.1.19" extension="1234567890"/>
            </asOtherIDs>
            <scopingOrganization classCode="ORG "
determinerCode="INSTANCE " xsi:nil="true"/>
        </patientPerson>
    </patient>
</subject>
<!--住院位置-->
<location typeCode="LOC">
    <time/>
    <serviceDeliveryLocation classCode="SDLOC">
        <location classCode="PLC" determinerCode="INSTANCE">
            <!--病床号-->
            <id>

```

```

        <item root="2.16.156.10011.1.22" extension="001"/>
    </id>
    <name xsi:type="BAG_EN">
        <item>
            <part value="1床"/>
        </item>
    </name>
    <asLocatedEntityPartOf classCode="LOCE">
        <location classCode="PLC" determinerCode="INSTANCE">
            <!--病房号-->
            <id>
                <item root="2.16.156.10011.1.21" extension="001"/>
            </id>
            <name xsi:type="BAG_EN">
                <item>
                    <part value="205室"/>
                </item>
            </name>
        </location>
    </asLocatedEntityPartOf>
</location>
<serviceProviderOrganization classCode="ORG"
determinerCode="INSTANCE">
    <!--科室名称-->
    <id>
        <item root="2.16.156.10011.1.26" extension="001"/>
    </id>
    <name xsi:type="BAG_EN">
        <item>
            <part value="呼吸内科"/>
        </item>
    </name>
    <asOrganizationPartOf classCode="PART">
        <!-- 病区名称 -->
        <wholeOrganization classCode="ORG"
determinerCode="INSTANCE">
            <id>
                <item root="2.16.156.10011.1.27" extension="001"/>
            </id>
            <name xsi:type="BAG_EN">
                <item>
                    <part value="呼吸科病区"/>
                </item>
            </name>
        </wholeOrganization>
    </asOrganizationPartOf>
</serviceProviderOrganization>
</serviceDeliveryLocation>
</location>
</encounter>
</componentOf1>
</placerGroup>
</subject>
<queryAck>
    <queryResponseCode code="OK"/>
</queryAck>
</controlActProcess>
</QUMT_IN020040UV01>

```

A.3.3 医嘱信息查询服务-响应消息（异常）

```

<QUMT_IN020040UV01 xmlns="https://www.chiss.org.cn"xmlns:xsi="http://www.w3.org/2001/XMLSchema-instance"
ITSVersion="XML_1.0" xsi:schemaLocation="https://www.chiss.org.cn
https://www.chiss.org.cn/HL7V3Message/multicacheschemas/QUMT_IN020040UV01.xsd">

```

```

<!-- 消息流水号 -->
<id root="2.16.156.10011.2.5.1.1" extension="22a0f9e0-4454-11dc-a6be-3603d6866811"/>
<!-- 消息创建时间 -->
<creationTime value="20120106110000"/>
<!-- 消息的服务标识-->
<interactionId root="2.16.156.10011.2.5.1.2" extension="QUMT_IN020040UV01"/>
<!--处理代码，标识此消息是否是产品、训练、调试系统的一部分。D：调试；P：产品；T：训练 -->
<processingCode code="P"/>
<!-- 消息处理模式：A(Archive); I(Initial load); R(Restore from archive); T(Current
processing) -->
<processingModeCode/>
<!-- 消息应答：AL(Always); ER(Error/reject only); NE(Never) -->
<acceptAckCode code="AL" />
<!-- 接收者 -->
<receiver typeCode="RCV">
  <device classCode="DEV" determinerCode="INSTANCE">
    <!-- 接受者ID -->
    <id>
      <item root="2.16.156.10011.2.5.1.3" extension="@111"/>
    </id>
  </device>
</receiver>
<!-- 发送者 -->
<sender typeCode="SND">
  <device classCode="DEV" determinerCode="INSTANCE">
    <!-- 发送者ID -->
    <id>
      <item root="2.16.156.10011.2.5.1.3" extension="@222"/>
    </id>
  </device>
</sender>
<!--typeCode为处理结果，AA表示成功 AE表示失败-->
<acknowledgement typeCode="AE">
  <targetMessage>
    <id root="2.16.156.10011.2.5.1.1" extension="22a0f9e0-4454-11dc-a6be-3603d6866807"/>
  </targetMessage>
  <acknowledgementDetail>
    <text value="处理结果说明"/>
  </acknowledgementDetail>
</acknowledgement>
<controlActProcess classCode="CACT" moodCode="APT">
  <queryAck>
    <queryResponseCode code="OK"/>
  </queryAck>
</controlActProcess>
</QUMT_IN020040UV01>

```